



## Montague Square, SE15

### £300,000

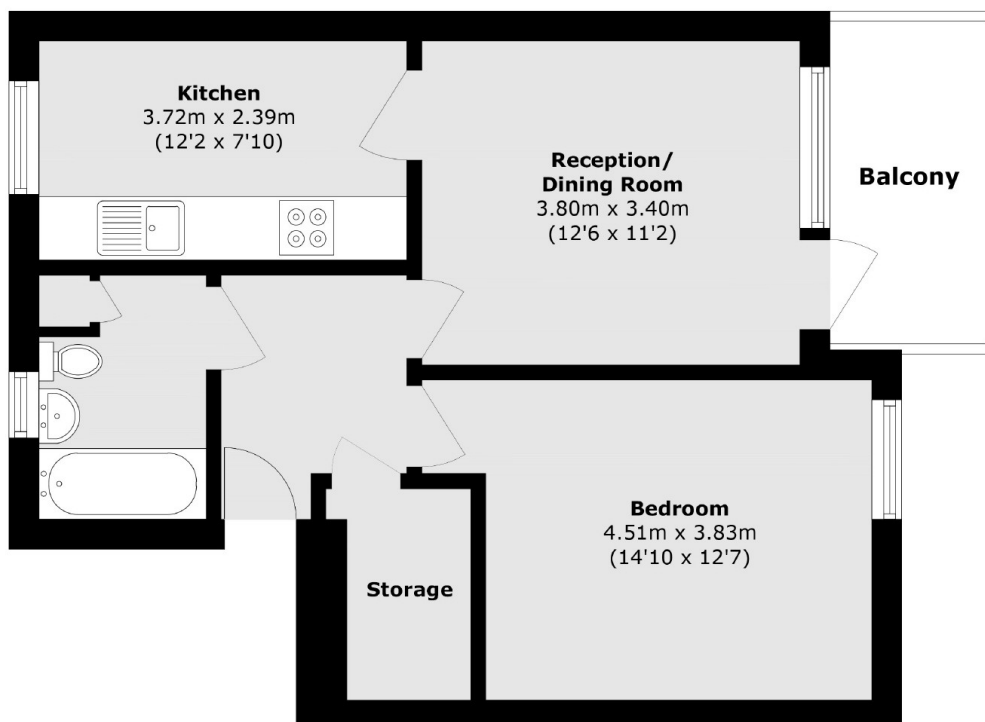
A bright and spacious one bedroom flat in a purpose built block on Montague Square. The flat boasts ample storage space as well as a private west facing balcony.

Perfectly placed a few minutes walk from Queens Road Peckham Station (Zone 2) with frequent Overground and rail links into Central London. The shops, bars and restaurants of Peckham high street, Nunhead and Camberwell are all within close proximity.

### Features

- One Bedroom
- Private Balcony
- Good Condition
- Purpose Built
- Excellent Location
- Eat In Kitchen

# Montague Square, London, SE15



Total area (approx.): 47.5 sq. m (511.2 sq. ft)

Balcony area (approx.): 5.1 sq. m (54.8 sq. ft)