



Ellery Street, SE15
£1,000,000

Dexters



Ellery Street, SE15

A beautifully presented three double-bedroom Victorian terraced house, situated on Ellery Street SE15, being offered to the market with no onward chain. The house boasts uninterrupted views of the green spaces of Dr Harold Moody Park.

At the front of the house is a spacious reception room, an ideal space for relaxing or entertaining. The ground floor also features a large family-sized bathroom, thoughtfully positioned for convenience. The heart of the home is the open-plan kitchen and dining room, which has been thoughtfully extended to the side to offer a bright and airy living space. With a stunning kitchen island, exposed brick wall, and bi-fold doors that open out to a sunny south-facing garden. Upstairs, you'll find three well-proportioned double bedrooms and a further family sized bathroom.

Ellery Street is perfectly placed for Nunhead's independent restaurants, bars and cafés. The open spaces of Peckham Rye Park are a short walk away. Both Nunhead & Peckham Rye stations are within close proximity, with trains to Blackfriars, City Thameslink, Farringdon, St.Pancras and Victoria.

Features

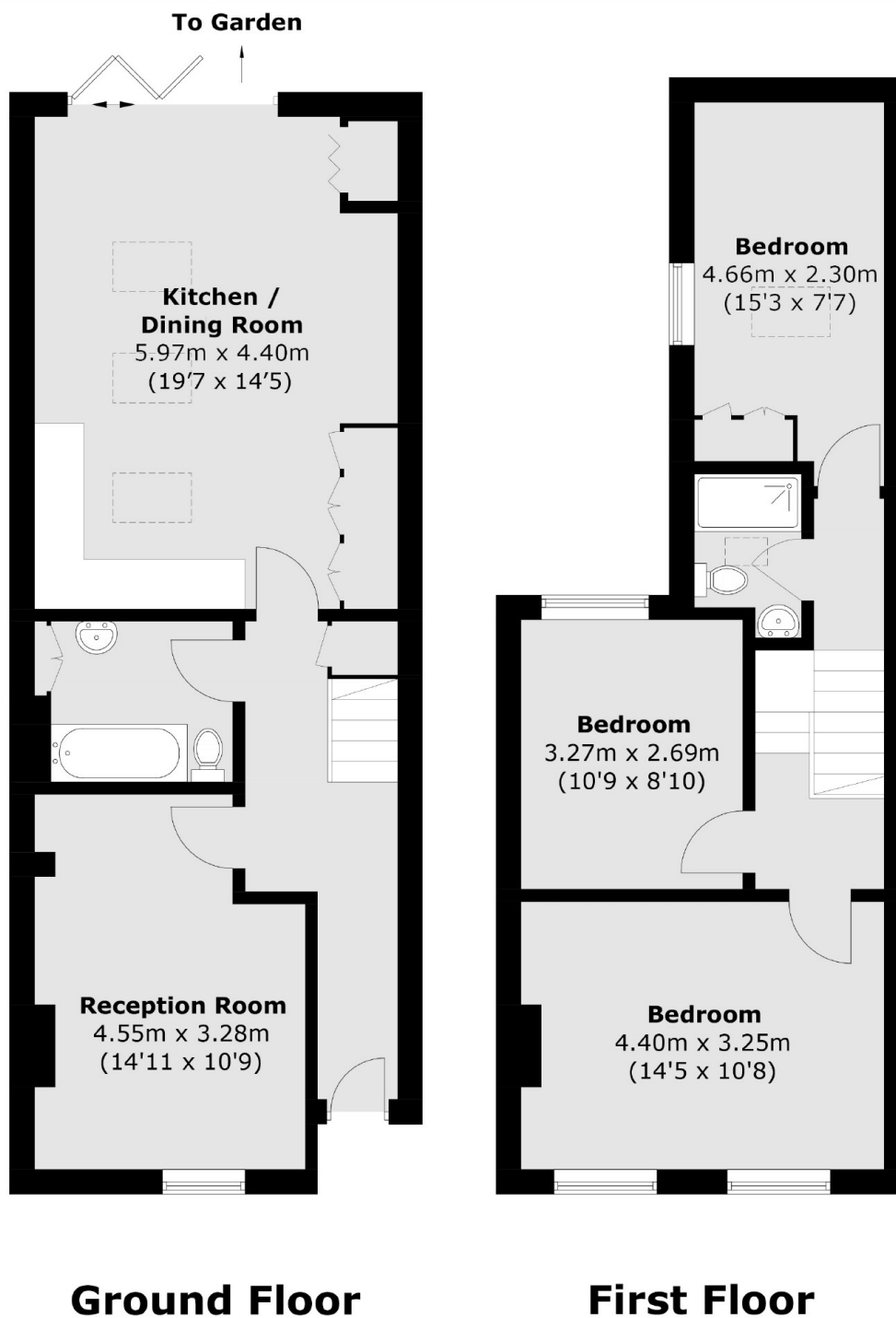
- Victorian Freehold House
- No Onward Chain
- South Facing Garden
- Underfloor Heating
- Great Location
- 1069 Square Foot







Ellery Street, London, SE15



Total area (approx.): 99.4 sq. m (1069.8 sq. ft)

Dexters

Peckham Rye
2 Barry Parade
Barry Road
London
Sales
020 8742 4146

Energy Rating: C. We aim to make our particulars both accurate and reliable. However they are not guaranteed; nor do they form part of an offer or contract. If you require clarification on any points then please contact us, especially if you're traveling some distance to view. Please note that appliances and heating systems have not been tested and therefore no warranties can be given as to their good working order.

 **RICS** | Regulated
Estate Agent
and Letting Agent

dexters.co.uk