



Surrey Road, SE15

£800,000

A charming Victorian end of terrace house spanning close to 1200 sq/ft of internal space, and located on a quiet street in Nunhead, SE15.

Surrey Road is perfectly placed for Nunhead station with frequent trains to Victoria, Blackfriars, City Thameslink, Farringdon and St Pancras. The green open spaces of Peckham Rye, Nunhead Cemetery and the Telegraph Hill Parks are all within easy reach.

Features

- End of Terrace
- Three Bedrooms
- Two Reception Rooms
- Private Garden
- Desirable Location
- Chain Free

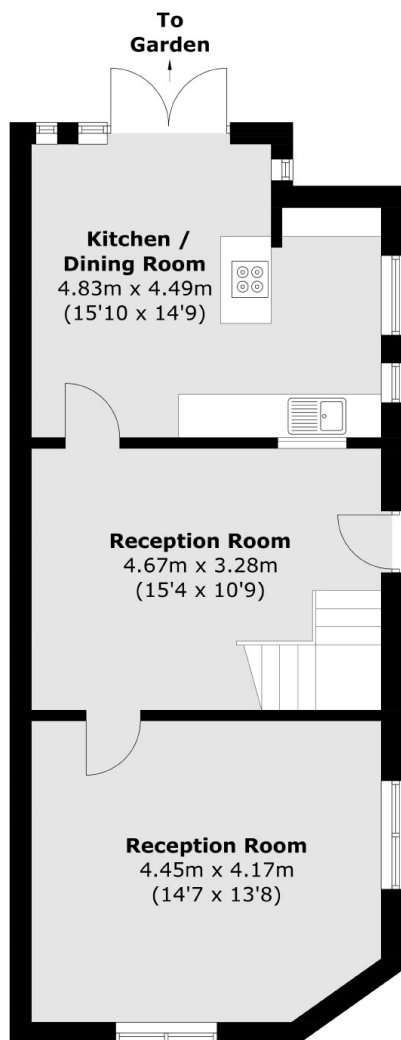


Surrey Road, SE15

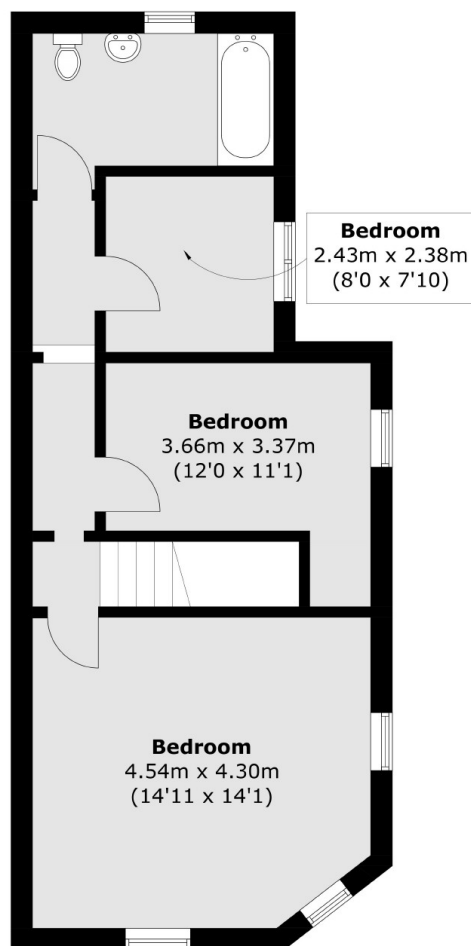
As you step through the front door, you're greeted by a spacious reception area that immediately showcases the property's exceptional character. The room is highlighted by stunning period features, including high ceilings, beautiful wooden flooring, and an elegant staircase. To the left, you'll find a large reception room with dual-aspect windows that bathe the space in natural light. This versatile room could easily serve as an additional bedroom if desired. The kitchen and dining room are generously sized, perfect for both cooking and entertaining, and feature doors that open onto a charming courtyard garden, which also offers convenient side access to the street. Upstairs, you'll discover three well-proportioned bedrooms and a family bathroom.



Surrey Road, Peckham, SE15



Ground Floor



First Floor

Total area (approx.): 108.2 sq. m (1,164.5 sq. ft)