



## Rye Hill Park, SE15

### £275,000

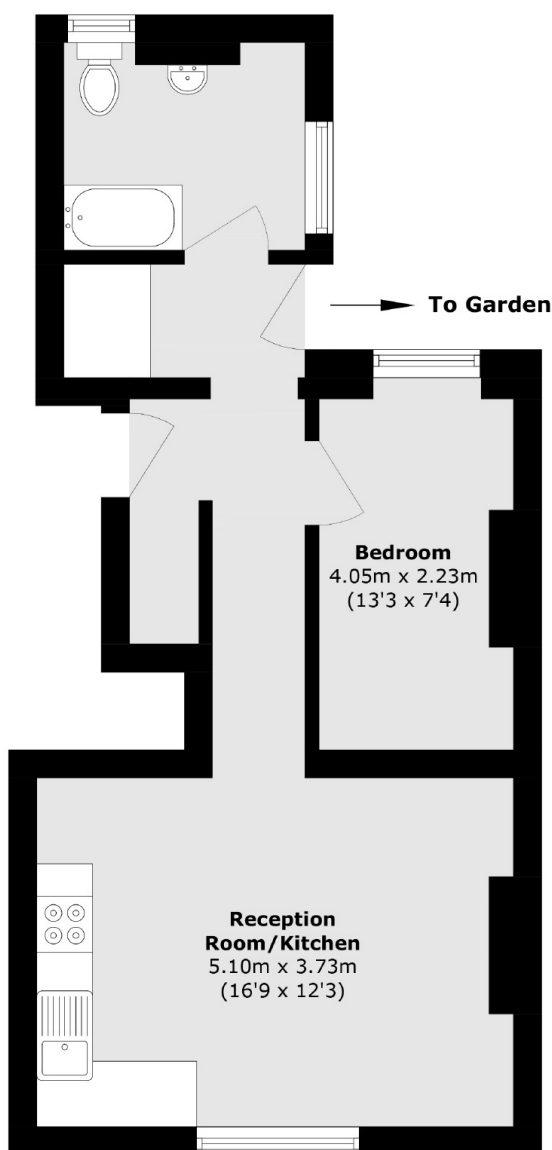
This delightful one-bedroom ground floor flat offers a fantastic opportunity to enjoy the convenience of modern living, with the added benefit of direct access to a spacious communal garden. Perfectly located in the sought-after Rye Hill Park area, this property is ideal for first-time buyers or those looking to downsize. Being sold with no onward chain.

Conveniently located and within easy reach of Peckham Rye & Nunhead stations. Lordship Lane & Nunhead Lane are both within close proximity, and offer an array of independent shops, cafés and restaurants.

### Features

- One Bedroom
- Large Communal Garden
- No Onward Chain
- Great Location
- Open Plan Living Area
- Good Condition

# Rye Hill Park, London, SE15



Total area (approx.): 44.5 sq. m (478.9 sq. ft)

## Dexters

Peckham Rye  
2 Barry Parade  
Barry Road  
London

Sales  
020 8742 4146

Energy Rating: D. We aim to make our particulars both accurate and reliable. However they are not guaranteed; nor do they form part of an offer or contract. If you require clarification on any points then please contact us, especially if you're traveling some distance to view. Please note that appliances and heating systems have not been tested and therefore no warranties can be given as to their good working order.

 **RICS** | Regulated  
Estate Agent  
and Letting Agent

[dexters.co.uk](https://www.dexters.co.uk)