



## Nunhead Grove, SE15

£1,150,000

This stunning Grade II listed converted chapel offers a unique blend of period charm and contemporary elegance, ideally located in the heart of Nunhead. Boasting over 1,600 sq ft of living space, this spacious home is a true standout in the area.

### Features

- Grade II Listed
- Freehold
- Triple Height Ceilings
- Mezzanine Level
- Private Garden
- Over 1600 Sq/Ft





## Nunhead Grove, SE15

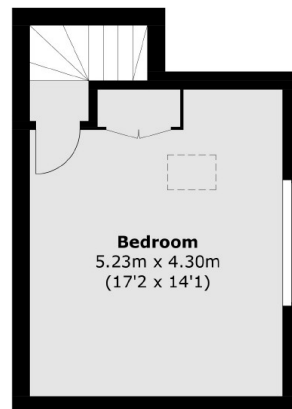
Upon entering, you are immediately struck by the grandeur of the triple height ceilings, which flood the space with natural light. The open-plan living area is defined by soaring ceilings, exposed beams, and original brickwork, creating a unique and inviting atmosphere. This flows effortlessly into a mezzanine level, ideal for use as an office, guest bedroom, or additional living space. On the ground floor, you'll find two spacious double bedrooms, both featuring en-suite bathrooms, providing a perfect blend of comfort and privacy.

The first floor boasts a fully fitted modern kitchen with ample storage cupboard space, ideal for culinary enthusiasts and everyday living. A family bathroom is also conveniently located on this floor. The property has retained its characterful features, carefully preserving the charm and history of the building while offering modern functionality throughout. To the rear, a private garden provides a peaceful outdoor retreat, perfect for relaxation or entertaining. With its freehold status and harmonious blend of original features and contemporary design, this home offers both space and character in abundance. Whether you're looking for a family home or a stylish urban retreat, this exceptional property is sure to make a lasting impression.

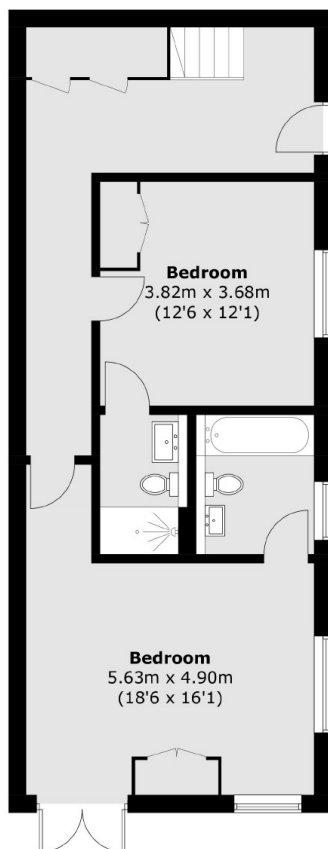




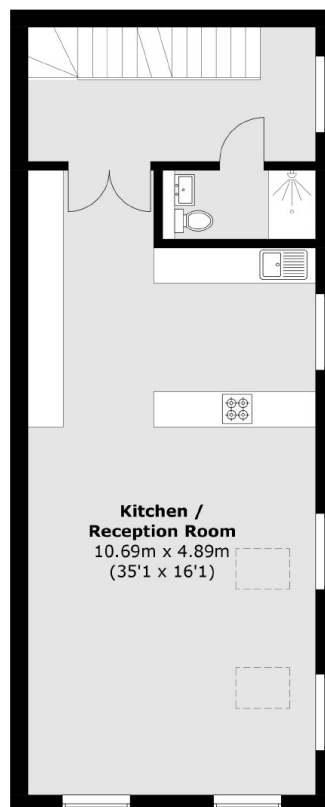
# Nunhead Grove, London, SE15



**Second Floor**



**Ground Floor**



**First Floor**

Total area (approx.): 153.1 sq. m (1,648.0 sq. ft)