



Honiton Gardens, SE15

£750,000

A beautiful architecturally designed three-bedroom terraced house, nestled in the heart of Nunhead, SE15. This exceptional property seamlessly combines modern style with practicality, offering a spacious and light-filled living experience.

Enviably located just a short walk from Nunhead and Queens Road stations along with the green spaces of Telegraph Hill, Nunhead Cemetery and Peckham Rye. The area's wide range of restaurants, bars and community events are on your doorstep.

Features

- Three Bedrooms
- Open Plan Living
- Patio Garden
- Rear Garden Access
- Excellent Location
- 890 Square Foot



Honiton Gardens, SE15

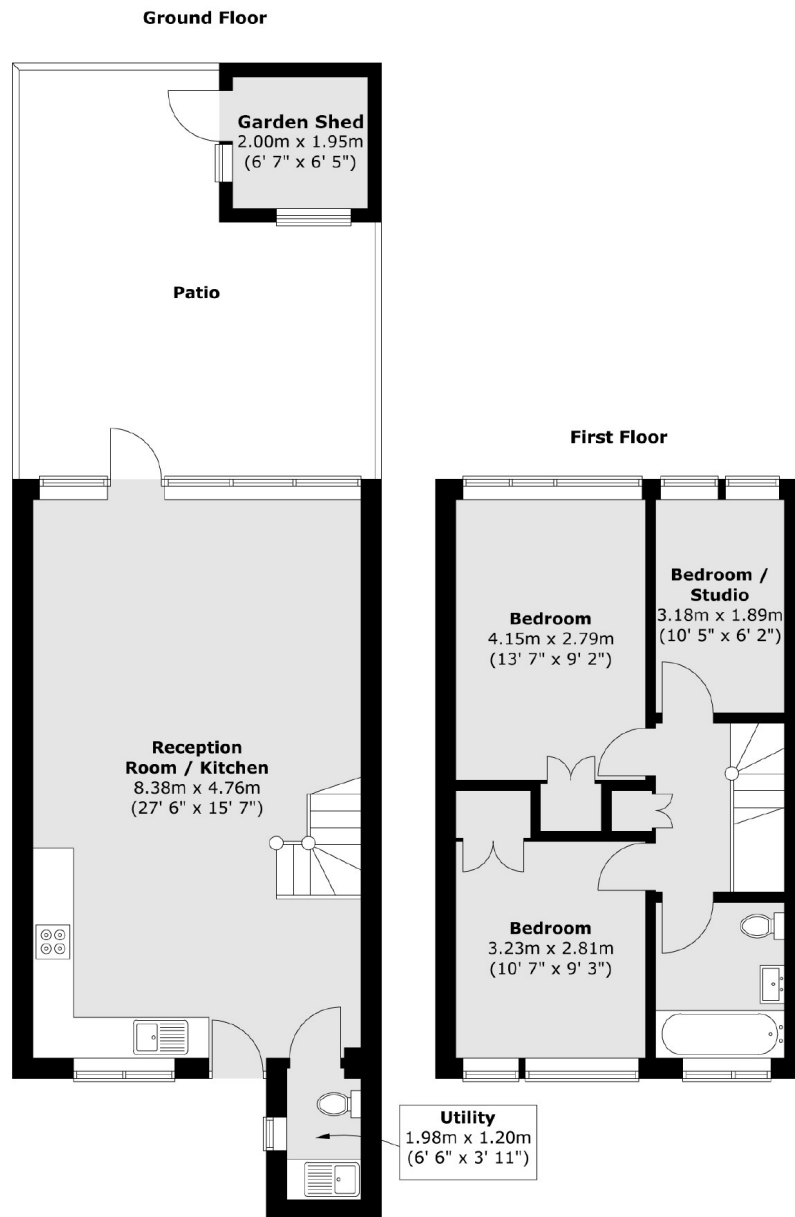
Upon entering you are greeted by an expansive, open-plan living space, ideal for both relaxing and entertaining. The stylish modern kitchen is fitted with high-quality appliances and sleek finishes, while the adjoining reception room provides ample space for comfortable seating. The open-plan layout also offers room for a dining area, making it perfect for hosting family meals or gatherings with friends. Large glass doors lead directly to a generous patio garden, extending your living space outdoors for alfresco dining or simply enjoying the sunshine.

The ground floor also features a practical W.C utility room, adding extra convenience to the home.

Upstairs, the property boasts two spacious double bedrooms, both with built-in storage. The third bedroom is versatile, offering the perfect space for a home office, study, or a child's bedroom, depending on your needs.



Honiton Gardens, London, SE15



Total area (approx.) : 82.7 sq. m (890 sq. ft)
Total patio area (approx.) : 45.5 sq. m (490 sq. ft)
Total Garden Shed area (approx.) : 3.9 sq. m (42 sq. ft)