



Peckham Grove, SE15

£249,999

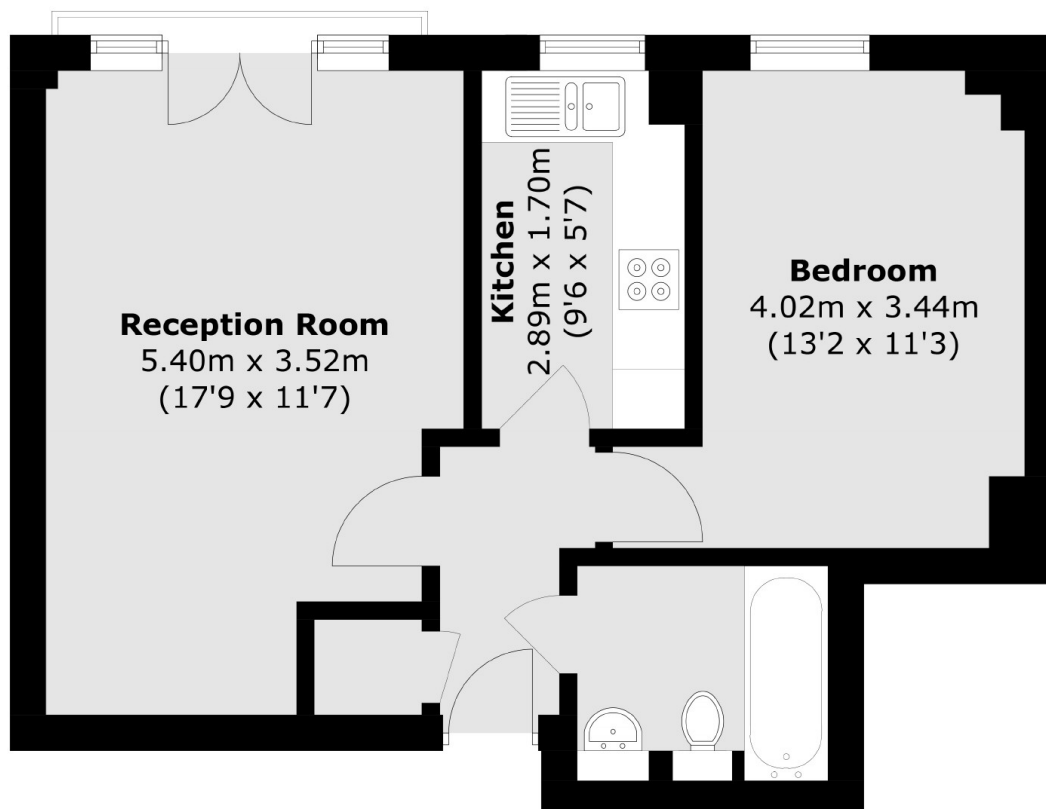
Located on the first floor of this modern block is this delightful & bright one bedroom apartment. The property comprises a good size double bedroom, large living / dining room with Juliet balcony, separate kitchen and fully fitted bathroom. An ideal purchase for a first time buyer.

Conveniently located within easy reach of Peckham Rye Station, providing swift connections to key London destinations such as London Bridge and Victoria. The area boasts an array of local amenities including trendy cafés, vibrant markets, and excellent restaurants

Features

- One Bedroom
- First Floor
- Separate Kitchen
- Long Lease
- Close To Burgess Park
- Perfect First Time Buy

Peckham Grove, London, SE15



Total area (approx.): 43.4 sq. m (467.1 sq. ft)

Dexters

Peckham Rye
2 Barry Parade
Barry Road
London
Sales
020 8742 4146

Energy Rating: D. We aim to make our particulars both accurate and reliable. However they are not guaranteed; nor do they form part of an offer or contract. If you require clarification on any points then please contact us, especially if you're traveling some distance to view. Please note that appliances and heating systems have not been tested and therefore no warranties can be given as to their good working order.

 **RICS** | Regulated
Estate Agent
and Letting Agent

[dexters.co.uk](https://www.dexters.co.uk)