



Basing Court, SE15

£325,000

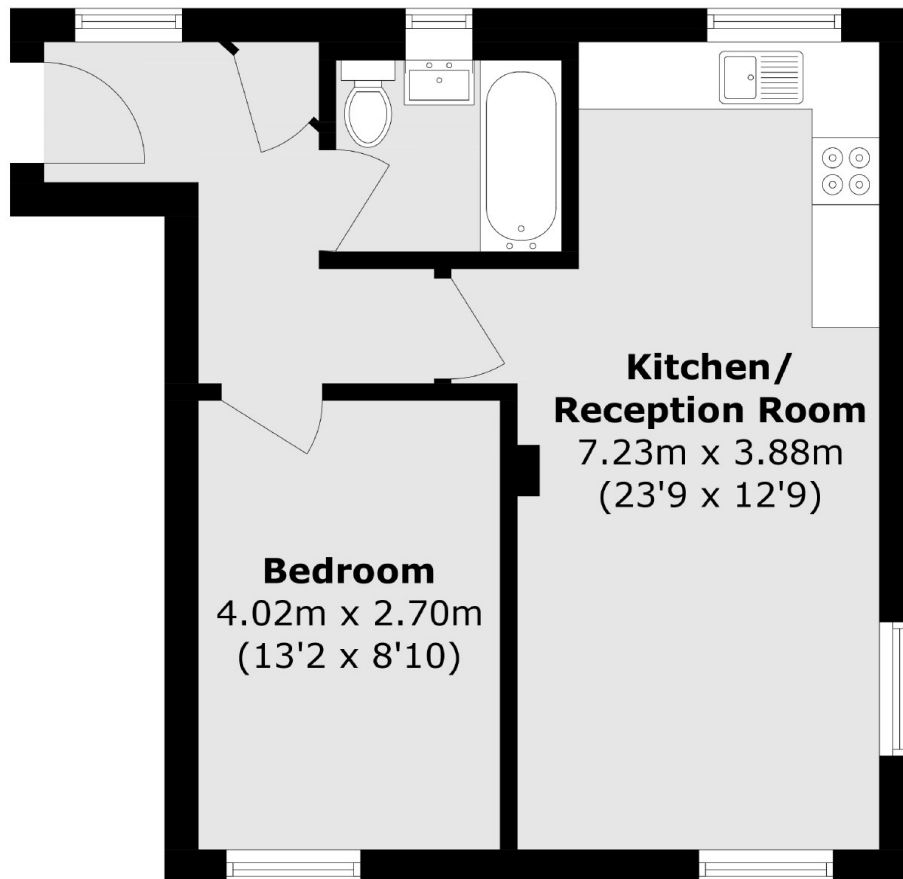
This stylish one-bedroom apartment is located on the second floor of a secure, gated development in the heart of Peckham, SE15. Bright and modern, the apartment is well-presented throughout, offering a comfortable living space. Set within a well-maintained development, residents can also enjoy a lovely communal garden, perfect for outdoor relaxation. Ideally situated close to local transport links, you'll have easy access to everything Peckham has to offer, including shops, cafés, and green spaces. Offered to the market chain-free, this property presents an excellent opportunity for both first-time buyers and investors alike.

Peckham Rye station is just 8 minutes walk away with train links to London Bridge, Victoria, Blackfriars, City Thameslink, Farringdon and St Pancras, plus Overground links to Canada Water, Clapham Junction, Shoreditch, Hoxton and Dalston Junction).

Features

- One Bedroom Apartment
- Gated Development
- Open Plan Kitchen / Reception
- Communal Garden
- Close To Transport Links
- Chain Free

Basing Court,
London, SE15



Total area (approx.): 45.8 sq. m (493.0 sq. ft)