



Asylum Road, SE15

£625,000

This charming first-floor period conversion offers a perfect blend of character and modern living, ideally located in the heart of Peckham. Retaining beautiful period features with a stylish finish, this two-bedroom flat provides a spacious and light-filled environment that's perfect for city professionals, couples, or small families.

Queen's Road Peckham is just a short walk away and provides frequent rail links to London Bridge and London Overground services to Clapham Junction, Canada Water, Shoreditch and Dalston. There are frequent bus services to Central London from Old Kent Road. The green spaces of Peckham Rye, Burgess Park and Telegraph Hill are all within close proximity.

Features

- First Floor Period Conversion
- Two Double Bedrooms
- Beautiful High Ceilings
- South West Facing Garden
- Communal Roof Terrace
- Share Of Freehold

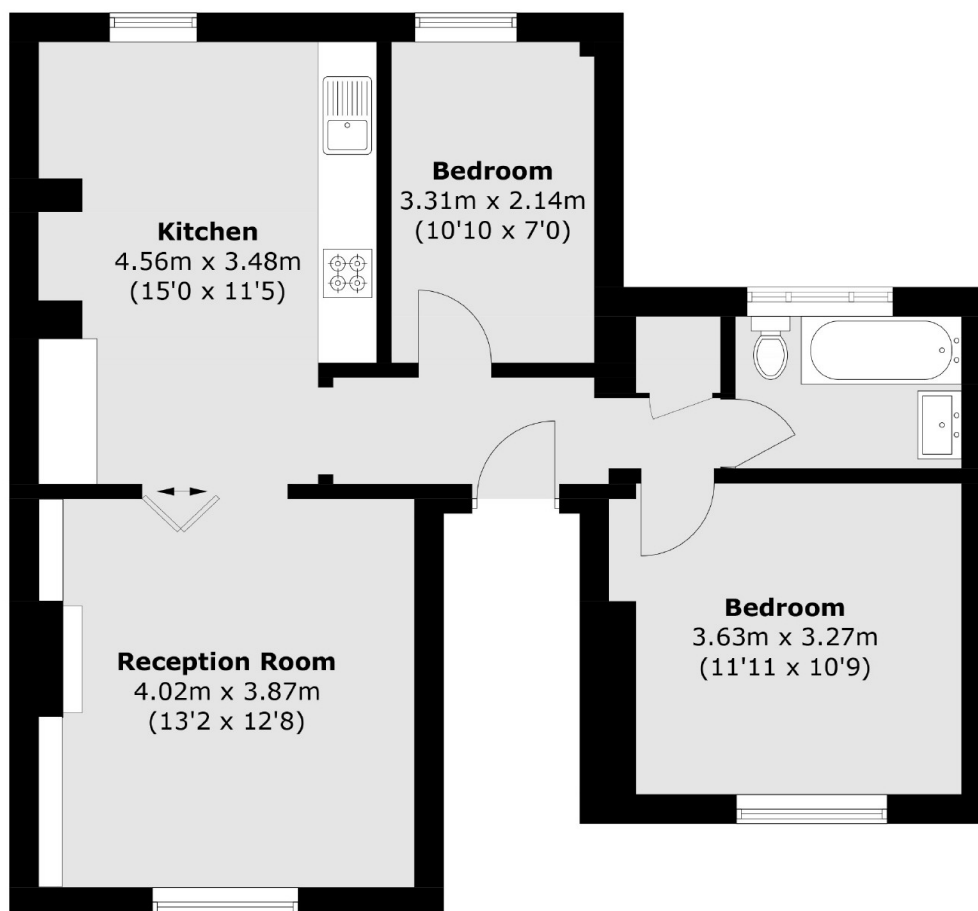


Asylum Road, SE15

As you step through the front door, you are immediately welcomed by a sense of space and light, with period features that immediately catch the eye. The entrance hallway is both practical and inviting, offering ample space for coats and shoes, while high ceilings and original woodwork create an elegant feel. Moving into the spacious living room, the stunning high ceilings and large windows flood the room with natural light. The generous space is ideal for both relaxing and entertaining, with a charming fireplace adding character to the neutral decor. The adjacent kitchen is modern and well-equipped, offering plenty of storage and counter space, and room for large dining table. At the rear of the flat, the master bedroom offers a peaceful retreat. It is generously sized, with large windows ensuring the room remains bright and airy. The second bedroom is another good-sized double, versatile enough for guests, a home office, or a child's room. The bathroom is bright and contemporary, with a clean, modern design. Outside, the expansive south-west facing garden is a real highlight, offering plenty of space for outdoor living, and features a delightful summer house. Additionally, there is also a communal roof terrace offering fantastic views of the surrounding area, perfect for watching the sunset.



Asylum Road, London, SE15



Total area (approx.): 60.5 sq. m (651.2 sq. ft)