



## Linden Grove, SE15

### £800,000

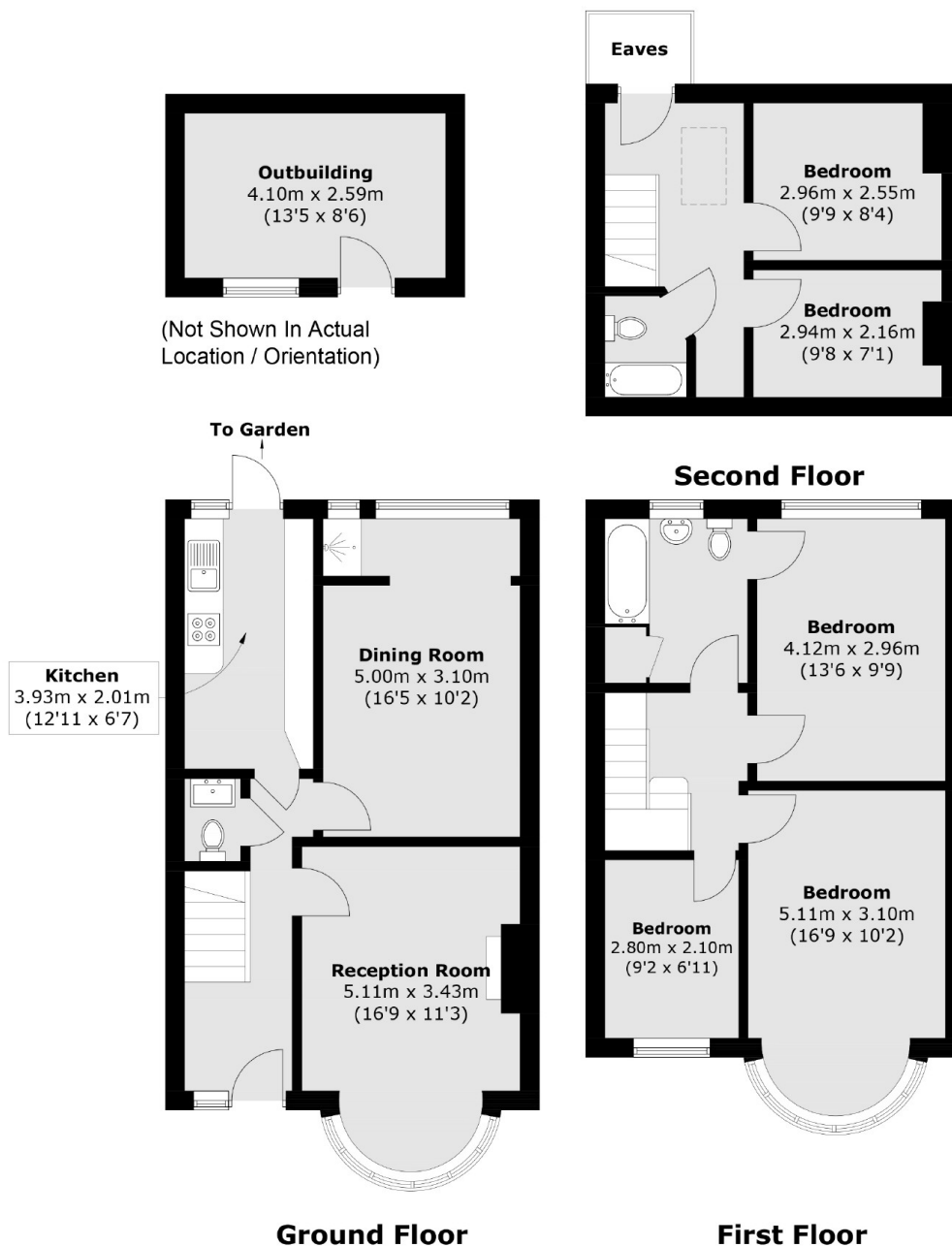
This charming 1930s terraced house, offering just under 1,300 sq/ft of internal space, is ideally located in the heart of Nunhead. Packed with potential, it presents a fantastic opportunity for someone to add their own personal touch. The property also boasts a spacious private garden, off-street parking, and is being sold with no onward chain.

Linden Grove is a sought after residential street perfectly placed for the open space of Peckham Rye Common. Both Peckham Rye and Nunhead train stations are equidistance providing overground connections to London Bridge, Blackfriars and the City.

### Features

- Terraced 1930s House
- Three Bedrooms + Loft Room
- Large Private Garden
- Off Street Parking
- Extension Potential STPP
- Chain Free

# Linden Grove, London, SE15



Approx Internal Area: 120.4 sq. m (1,296.0 sq. ft)  
(Excluding Eaves)

Outbuilding: 10.7 sq. m (115.2 sq. ft)

## Dexters

Peckham Rye  
2 Barry Parade  
Barry Road  
London

Sales  
020 8742 4146

Energy Rating: D. We aim to make our particulars both accurate and reliable. However they are not guaranteed; nor do they form part of an offer or contract. If you require clarification on any points then please contact us, especially if you're traveling some distance to view. Please note that appliances and heating systems have not been tested and therefore no warranties can be given as to their good working order.

**RICS** Regulated  
Estate Agent  
and Letting Agent

dexters.co.uk