



## York Grove, SE15

£525,000

This stunning Victorian school conversion apartment offers a unique and stylish living space that seamlessly blends period charm with modern amenities.

Perfectly placed a few minutes walk from Queens Road Peckham Station (Zone 2) with frequent Overground and rail links into Central London. The shops, bars and restaurants of Peckham high street, Nunhead and Camberwell are all within close proximity.

### Features

- Victorian School Conversion
- Two Double Bedrooms
- Open Plan Living/Kitchen
- Gated Development
- Allocated Parking
- Close To Transport Links



## York Grove, SE15

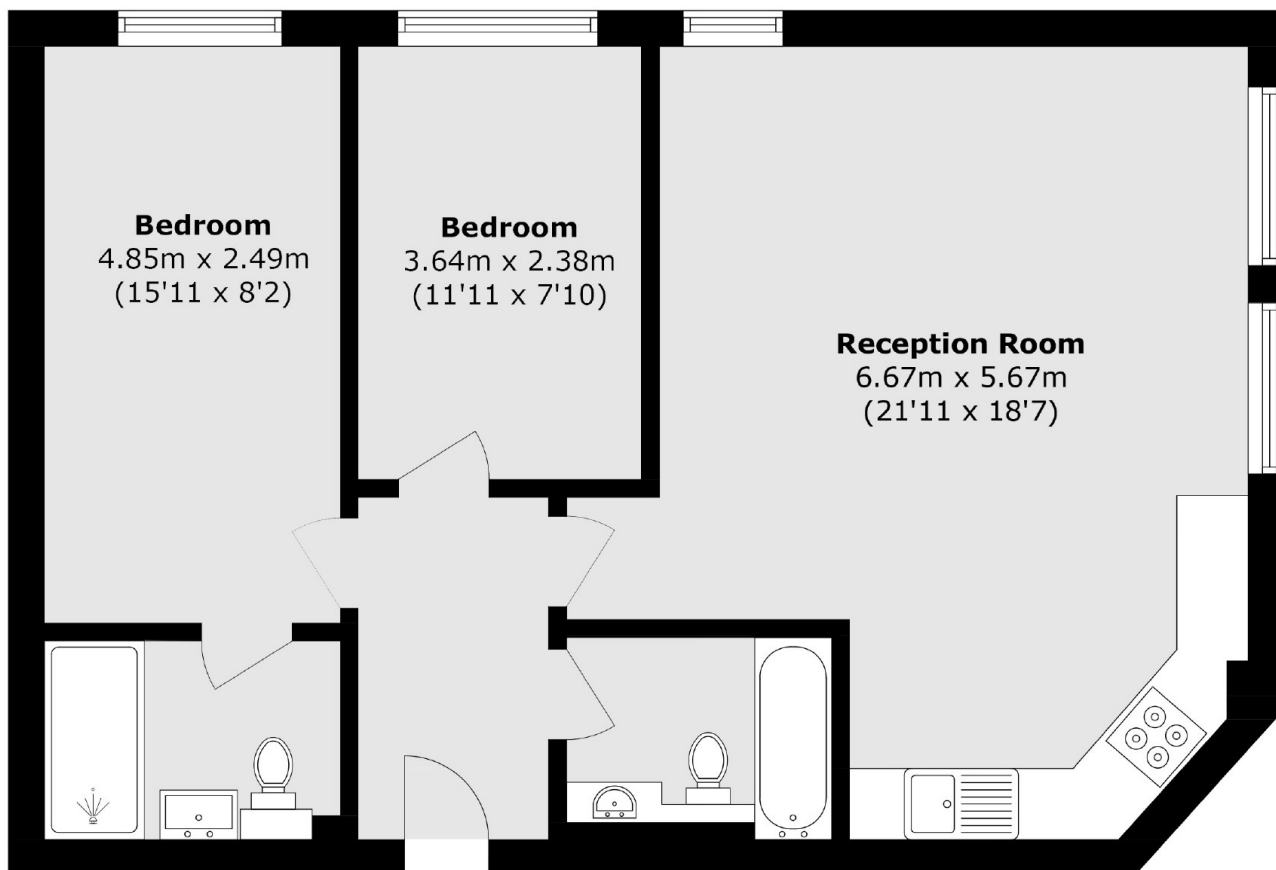
This spacious two-bedroom apartment features a light-filled open-plan living room and kitchen, complete with exposed brickwork and large windows that enhance the character and atmosphere of the space. Both double bedrooms are generously sized and include mezzanine storage, providing practical and clever space-saving solutions.

The apartment also boasts two contemporary bathrooms, both with underfloor heating. The property further benefits from gated access, providing both security and privacy as well as an allocated parking space and bike storage. With its unique historical setting, modern design, and convenient location, this property offers an exceptional urban living experience.





# York Grove, London, SE15



Total area (approx.): 66.8 sq. m (719.0 sq. ft)