



Nunhead Grove, SE15

£820,000

Nestled in a peaceful, sought-after location on Nunhead Grove, this delightful Victorian two bed terraced house offers a perfect blend of character and contemporary living. Set back from the street, the property looks out onto a beautiful green space providing a tranquil setting and a sense of privacy.

Nunhead Grove is a sought after residential street perfectly placed for the open space of Peckham Rye Common. Both Peckham Rye and Nunhead train stations are within walking distance providing overground connections to London Bridge, Blackfriars and the City.

Features

- Freehold House
- Two Bedrooms
- Outhouse Building
- Excellent Location
- Victorian Home
- South-West Facing Garden



Nunhead Grove, SE15

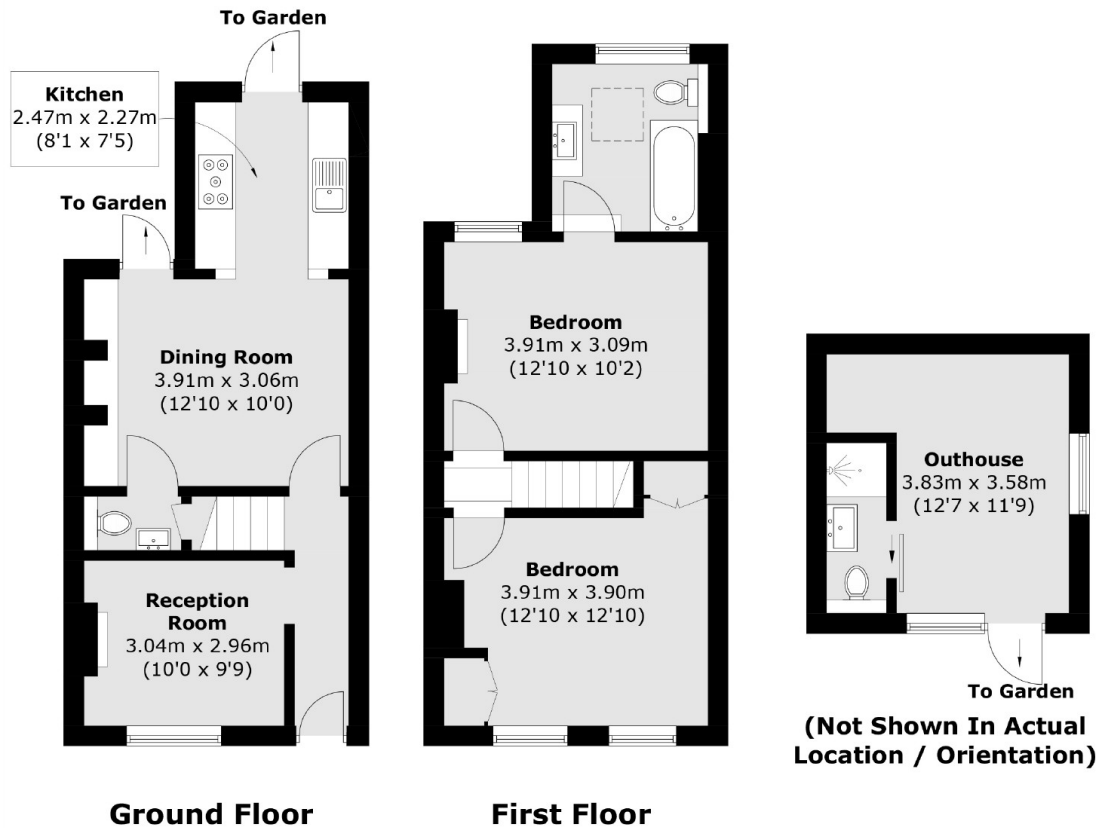
Upon entering, you'll find a character reception room to the front of the house, offering an inviting space to relax or entertain. The traditional stairs lead up the middle of the property, guiding you through to the rear of the home where you'll discover a stunning open plan dining room and kitchen. The well-appointed kitchen flows seamlessly into the dining area, which opens onto the south west-facing garden a beautifully landscaped outdoor space that makes the most of the sun throughout the day.

At the end of the garden is a charming outbuilding currently being used as a third room, offering versatility for home office use or guest accommodation. This bonus room is equipped with its own en suite bathroom.

Upstairs, you'll find two double bedrooms, each filled with natural light and offering ample space for rest and relaxation. The modern, three-piece family bathroom has been tastefully designed to complement the home's period charm.



Nunhead Grove, London, SE15



Approx Internal Area: 66.0 sq. m (710.4 sq. ft)
Outhouse: 13.8 sq. m (148.5 sq. ft)