



## Linden Grove, SE15

### £600,000

This beautifully presented first-floor flat presents a fantastic opportunity for those seeking a stylish and modern home in the heart of SE15.

Linden Grove is a sought after residential street perfectly placed for the open space of Peckham Rye Common. Both Peckham Rye and Nunhead train stations are equidistance providing overground connections to London Bridge, Blackfriars and the City.

### Features

- First Floor Flat
- Two Double Bedrooms
- Open Plan Kitchen/Living Room
- Balcony
- Share Of Freehold
- Close To Amenities



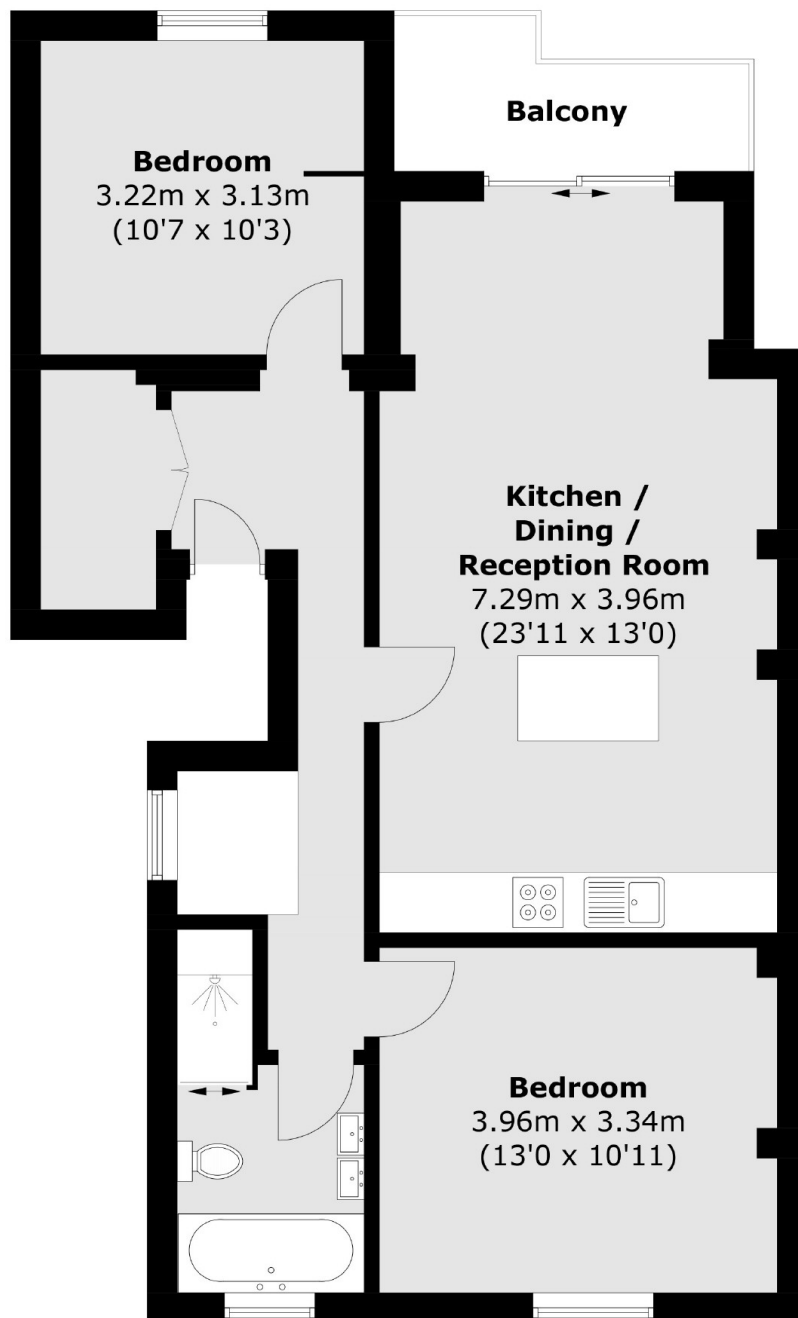
## Linden Grove, SE15

Offering a share of freehold, the property benefits from a high-quality finish throughout and boasts an open-plan kitchen / living room, perfect for both entertaining and relaxing. The spacious living area is flooded with natural light, creating a warm and inviting atmosphere. The property features two generous double bedrooms, providing ample space for both residents and guests. A standout feature of the property is the private balcony, offering an ideal spot for outdoor dining or simply enjoying a quiet moment. There is also a stunning modern bathroom complete with bathtub and shower.





# Linden Grove, London, SE15



Total area (approx.): 72.3 sq. m (778.2 sq. ft)  
Balcony : 4.4 sq. m (47.4 sq. ft)

## Dexters

Peckham Rye  
2 Barry Parade  
Barry Road  
London  
Sales  
020 8742 4146

Energy Rating: D. We aim to make our particulars both accurate and reliable. However they are not guaranteed; nor do they form part of an offer or contract. If you require clarification on any points then please contact us, especially if you're traveling some distance to view. Please note that appliances and heating systems have not been tested and therefore no warranties can be given as to their good working order.

 **RICS** | Regulated  
Estate Agent  
and Letting Agent

[dexters.co.uk](https://www.dexters.co.uk)