



## Kinsale Road, SE15

### £675,000

This beautifully presented and spacious two double bedroom, ground floor Victorian conversion flat, offers an ideal blend of period charm and modern comfort, and is located in the popular Bellenden area of SE15, with excellent transport links and a variety of local amenities within easy reach.

Kinsale Road offers a convenient location, perfectly placed for Bellenden village, Peckham Rye park & Lordship Lane. East Dulwich and Peckham Rye mainline stations are both within walking distance.

### Features

- Victorian Conversion
- Ground Floor Flat
- Two Double Bedrooms
- Private Garden
- Beautifully Presented
- Desirable Location





## Kinsale Road, SE15

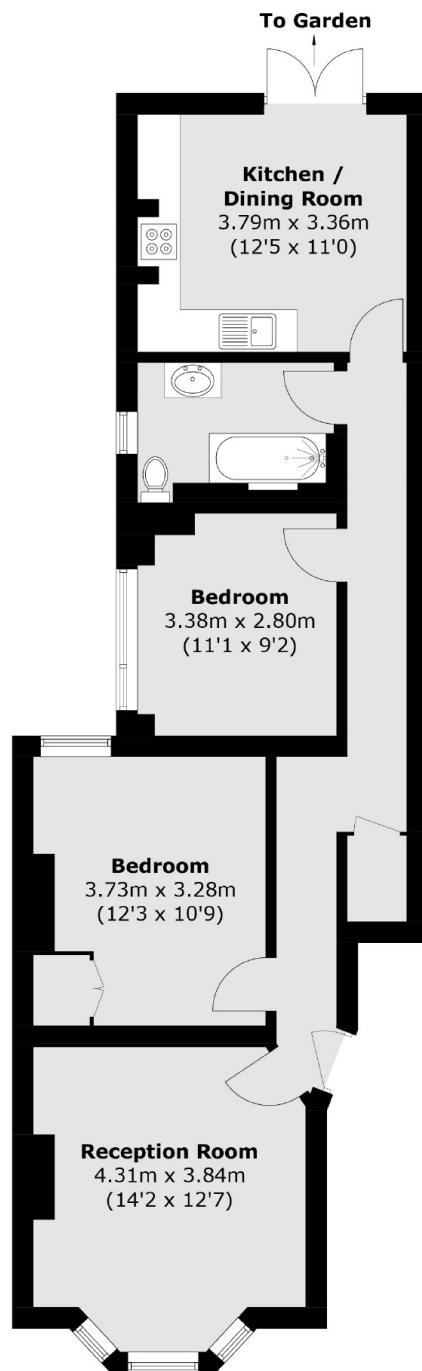
Upon entering you are immediately greeted by a spacious living room full of charm and period features, with high ceilings, wooden flooring and beautiful fireplace. It also benefits from having classic sash windows and shutters, allowing natural light to flood the space while maintaining a sense of privacy. The master bedroom is generously sized and has built-in wardrobes, providing ample storage. The second bedroom is also of a good size, offering versatility for use as a guest room, home office, or nursery.

The kitchen is well-appointed, with plenty of room for a dining table, making it an ideal space for family meals or entertaining guests. It also provides direct access to the private landscaped garden, creating a seamless indoor-outdoor flow.





# Kinsale Road, London, SE15



Total area (approx.): 70.1 sq. m (754.5 sq. ft)

## Dexters

Peckham Rye  
2 Barry Parade  
Barry Road  
London

Sales  
020 8742 4146

Energy Rating: C. We aim to make our particulars both accurate and reliable. However they are not guaranteed; nor do they form part of an offer or contract. If you require clarification on any points then please contact us, especially if you're traveling some distance to view. Please note that appliances and heating systems have not been tested and therefore no warranties can be given as to their good working order.

 **RICS** | Regulated  
Estate Agent  
and Letting Agent

[dexters.co.uk](https://www.dexters.co.uk)