



Gatonby Street, SE15

£800,000

Built in 1999 this four bedroom modern townhouse is well presented throughout, and located within walking distance of local amenities and excellent transport links.

Peckham Rye station is just 12 mins walk away, as are the amenities of Bellenden Road, with a wide array of fantastic restaurants, pubs and coffee shops.

Features

Modern Townhouse
Four Bedrooms
Two Bathrooms
Large Garden With Studio
Close To Transport Links
Well Presented Throughout

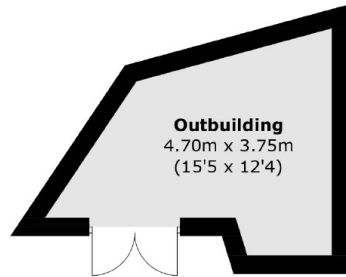


Gatonby Street, SE15

The property is set across three floors, with the ground floor comprising an open plan kitchen /diner with fully fitted kitchen and all modern appliances with generous storage cupboards. The garden is of a very good size and also has a fantastic studio, ideal for anyone who may work from home or useful for extra storage. Completing the ground floor is a smaller 4th bedroom or office and shower room / W.C. The first floor features a large reception room with juliet balcony, and to rear, the first of three double bedrooms. On the top floor are a further two double bedrooms and newly refurbished family bathroom.

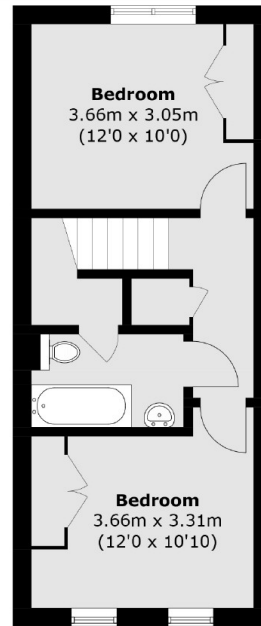


Gatonby Street,
London, SE15

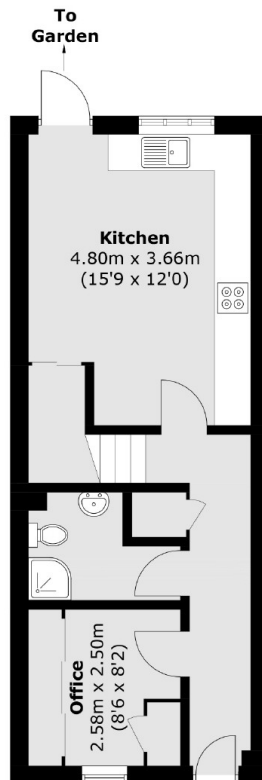


(Not Shown In Actual
Location / Orientation)

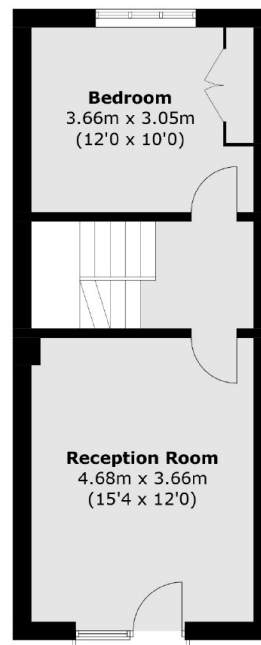
Outbuilding



Second Floor



Ground Floor



First Floor

Total area (approx.): 109.6 sq. m (1,179.8 sq. ft)
Outbuilding: 11.5 sq. m (123.8 sq. ft)