



Ivydale Road, SE15

£450,000

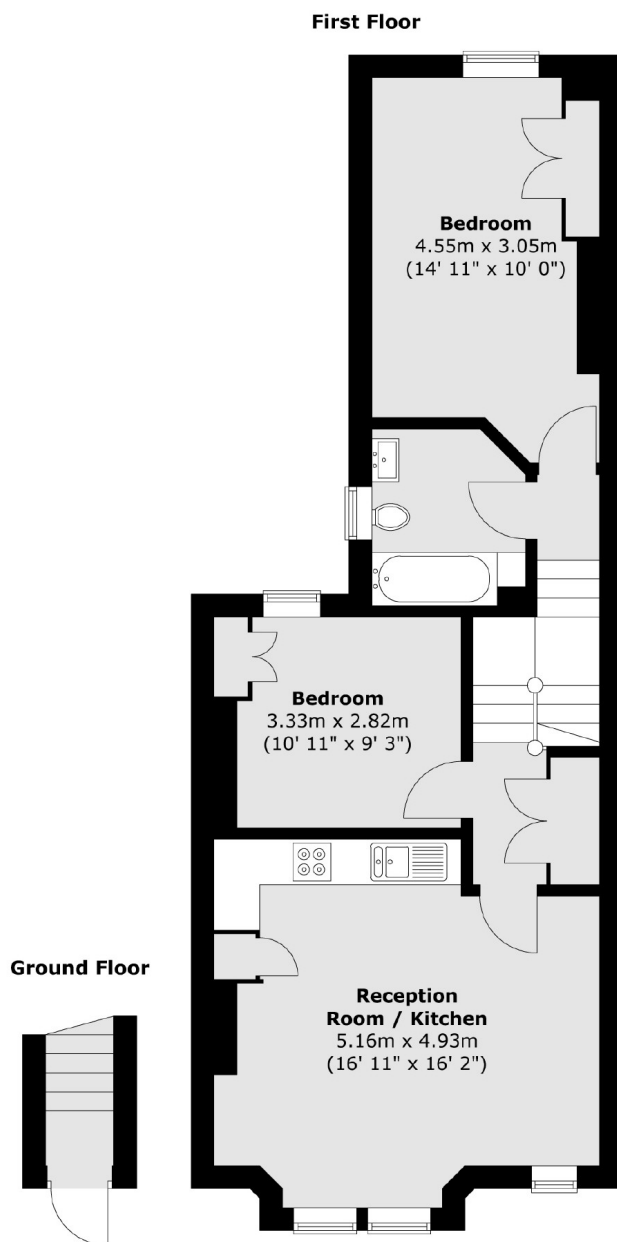
Newly refurbished to a very high standard we are pleased to offer to the market this chain free two double bedroom split level Victorian conversion flat in a very sought after location within walking distance to Nunhead station. The property has been refurbished throughout so gives a buyer the opportunity to move straight into this property and just arrange your furniture.

Ivydale Road is perfectly placed for Nunhead station with frequent trains to Victoria, Blackfriars, City Thameslink, Farringdon and St Pancras or Brockley station if the East London line is required. The green open spaces of Peckham Rye, Nunhead Cemetery and the Telegraph Hill Parks are all within easy reach.

Features

Newly Refurbished
Close to Transport
Split Level
Chain Free
Great Storage
Share of Freehold

Ivydale Road, London, SE15



Total area (approx.) : 63 sq. m (678 sq. ft)

Dexters

Peckham Rye
2 Barry Parade
Barry Road
London

Sales
020 8742 4146

Energy Rating: C. We aim to make our particulars both accurate and reliable. However they are not guaranteed; nor do they form part of an offer or contract. If you require clarification on any points then please contact us, especially if you're traveling some distance to view. Please note that appliances and heating systems have not been tested and therefore no warranties can be given as to their good working order.

 **RICS** | Regulated
Estate Agent
and Letting Agent

[dexters.co.uk](https://www.dexters.co.uk)