



## Borland Road, SE15

### £375,000

A well presented two double bedroom purpose built flat set within a small private development, Offered chain free with residents parking and communal gardens this is an ideal purchase for a first time buyer.

Borland Road is a quiet tree-lined street perfectly located for the extensive shopping facilities, bars and restaurants of Peckham and Nunhead station for trains to Victoria, Blackfriars, City Thameslink, Farringdon and St Pancras.

### Features

- First Floor
- Bright Reception
- Juliette Balcony
- Two Double Bedrooms
- Modern Bathroom
- No Onward Chain

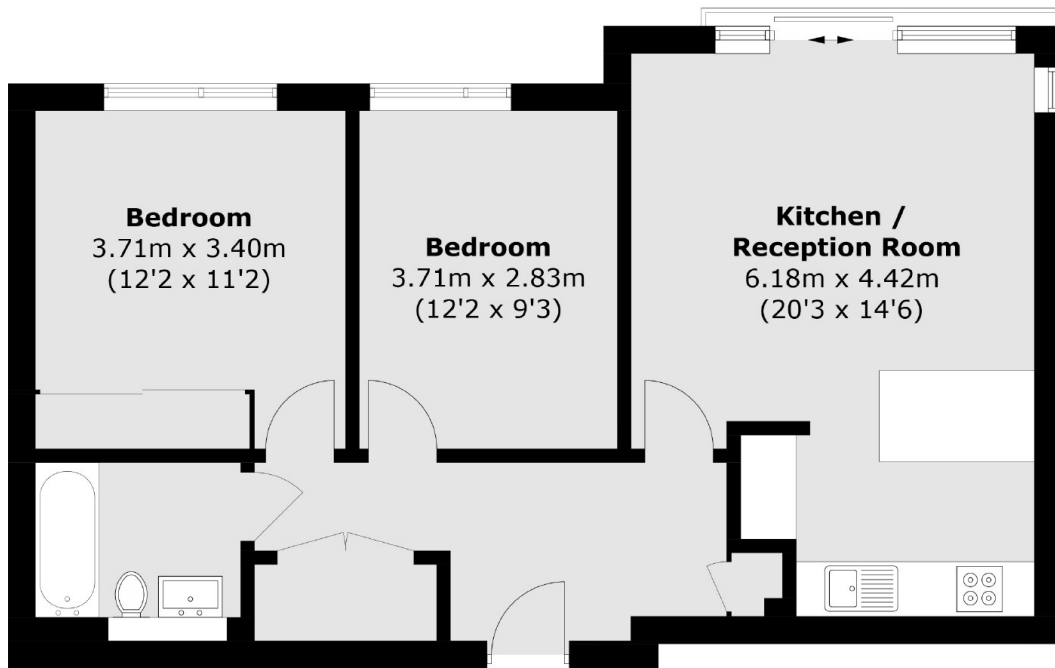


## **Borland Road, SE15**

The accommodation has been decorated in neutral colours throughout and receives an abundance of natural light. The living space includes a bright open plan Kitchen/reception with a Juliette balcony and two double bedrooms served by a modern bathroom/WC.



# Borland Road, London, SE15



Total area (approx.): 65.7 sq. m (707.2 sq. ft)