



Queens Road, SE15

£395,000

Boasting over 615 sq/ft of internal space, and located on the raised ground floor of this Victorian building, is this superb one double bedroom garden flat.

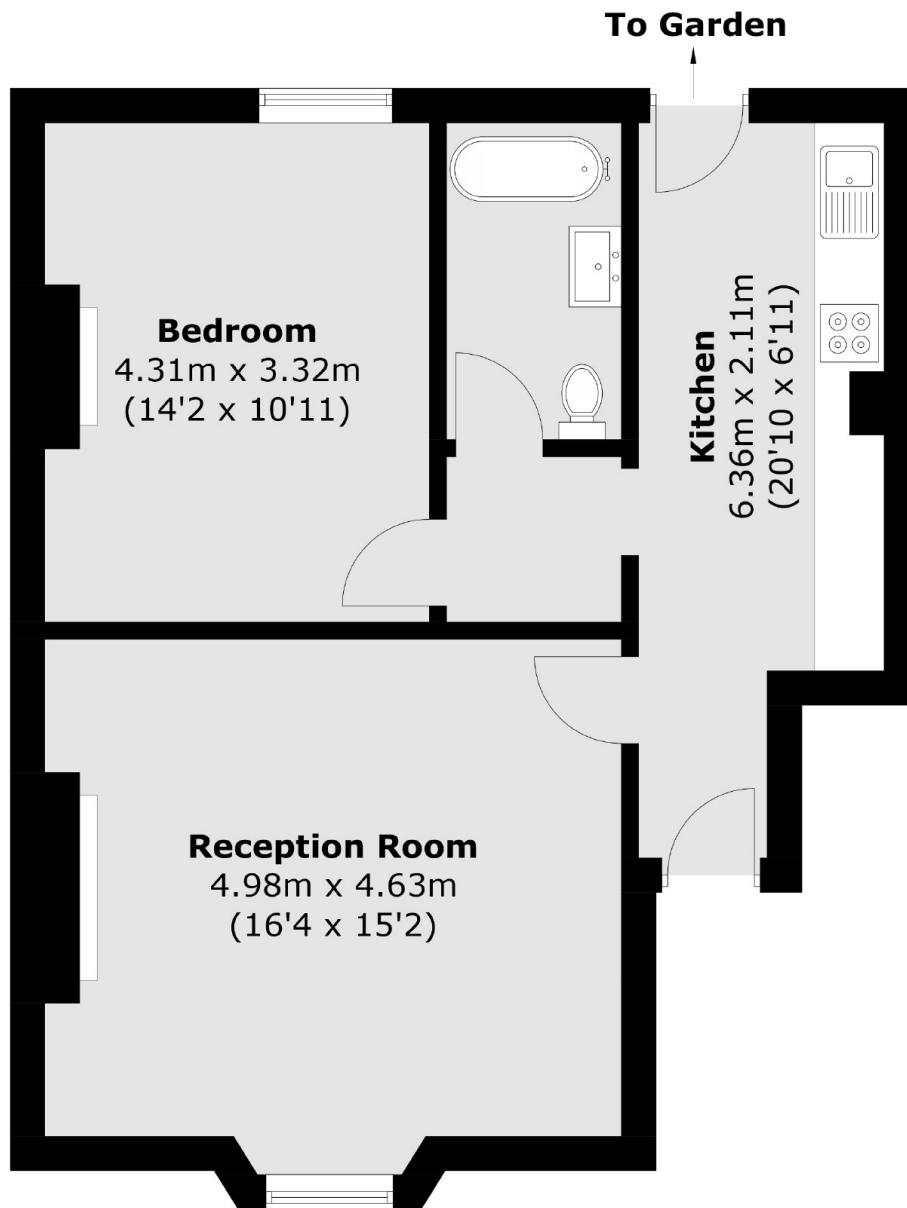
The property is filled with character and original period features. The living room is very spacious with beautiful high ceilings, fire place and large window, showering the room with lots of natural light. The bedroom is also of a good size, with ample space for wardrobes and dressing table or desk, handy for anyone who may work from home. The galley kitchen directly leads out onto a large garden of which a private section is owned. The bathroom has been renovated to a very good standard and includes roll top bath. The property also benefits from having a long lease and is available with no onward chain.

Located within easy reach of Kudu and Smokey Kudu, Peckham Cellars and blackbird bakery amongst others. Transport facilities include Queens Road station for frequent trains to London Bridge and Victoria,

Features

- Period Conversion
- Raised Ground Floor
- High Ceilings
- Direct Access To Garden
- Chain Free
- Long Lease

**Queens Road,
London, SE15**



Upper Ground Floor

Total area (approx.): 57.2 sq. m (615.7 sq. ft)

Dexters

Peckham Rye
2 Barry Parade
Barry Road
London
Sales
020 8742 4146

Energy Rating: C. We aim to make our particulars both accurate and reliable. However they are not guaranteed; nor do they form part of an offer or contract. If you require clarification on any points then please contact us, especially if you're traveling some distance to view. Please note that appliances and heating systems have not been tested and therefore no warranties can be given as to their good working order.

 **RICS** | Regulated
Estate Agent
and Letting Agent

dexters.co.uk