



Stuart Road, SE15

£800,000

This bright modern house is split across three floors, and has been neutrally decorated throughout to create a wonderful contemporary home. Superbly located close to the amenities of Nunhead.

Perfectly placed for Nunhead station with frequent trains to Victoria, Blackfriars, City Thameslink, Farringdon and St Pancras. Located within close proximity to the open spaces of Peckham Rye Park and the nature reserve of Nunhead Cemetery.

Features

- End Of Terrace Modern House
- Three Double Bedrooms
- Two Bathrooms
- Sunny Private Garden
- Desirable Location
- No Onward Chain



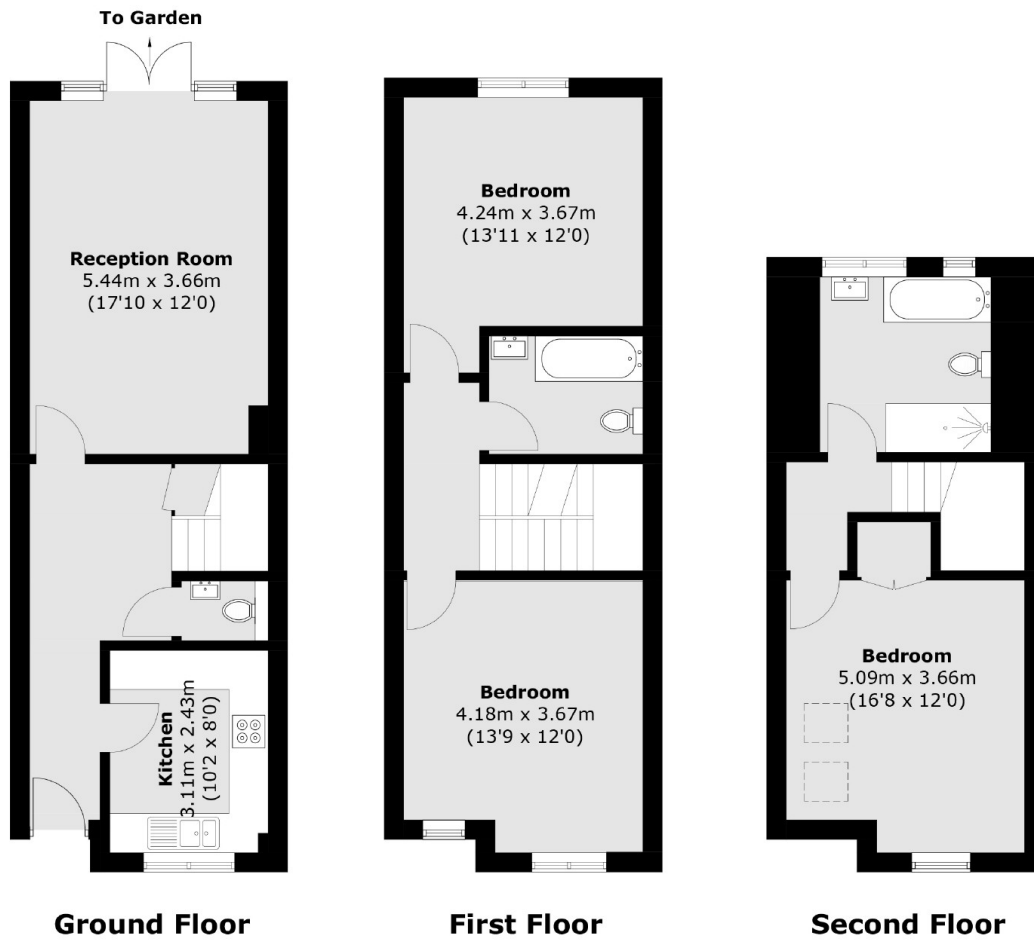
Stuart Road, SE15

On the ground floor is a fully fitted modern kitchen with gas appliances and generous cupboard storage. The living / dining room is spacious and opens out onto a very secluded sunny garden. There is also a handy downstairs WC.

On the first floor are two good size double bedrooms and family bathroom, and on the top floor is a further double bedroom with en-suite bathroom. The property is also being sold with no onward chain.



Stuart Road, London, SE15



Total area (approx.): 112.8 sq. m (1,214.2 sq. ft)