



## Ivydale Road, SE15

£385,000

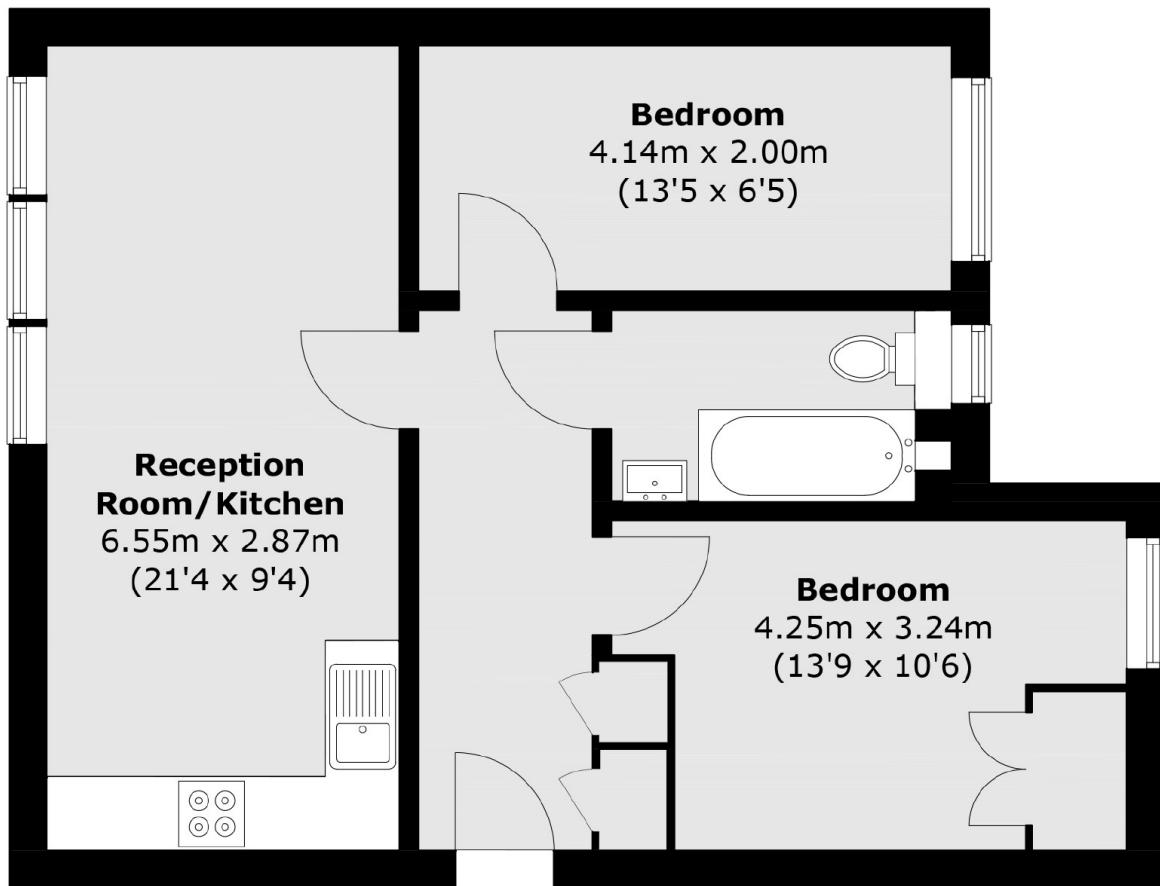
Located on the second floor of this modern development, is this bright and spacious two bedroom apartment with generous storage space and allocated parking in a secure gated car park with adjoining courtyard.

Ivydale Road is perfectly placed, close to Nunhead station for trains to Victoria, Blackfriars, City Thameslink, Farringdon and St Pancras. Brockley station for London Overground and London Bridge trains. There are first-class schools on your doorstep with the green open spaces of Telegraph Hill Parks and Peckham Rye, all within easy reach.

### Features

- Two Bedrooms
- Allocated Parking
- Open Plan Living
- New Kitchen & Bathroom
- Gated Development
- Close To Transport Links

# Ivydale Road, London, SE15



Total area (approx.): 52.0 sq. m (559.7 sq. ft)