



## Peckham Rye, SE15

£375,000

Located directly opposite Peckham Rye Park, this one double bedroom apartment has been tastefully decorated throughout to create a wonderful contemporary home.

Williamson Court is Ideally located for Nunhead Station for Zone 2 trains to Blackfriars, City Thameslink, St Pancras and Victoria. Peckham Rye Station runs into London Bridge and the Overground. Nunhead High Street with its independent shops and bars are close at hand as are to open green spaces of Peckham Rye Park.

### Features

- Modern Apartment
- First Floor
- One Double Bedroom
- Balcony
- Desirable Location
- Opposite Peckham Rye Park



## Peckham Rye, SE15

The property offers great room size proportions throughout. The living space is semi open plan, with a fully fitted modern kitchen and offers ample space for dining table. The double bedroom includes built in wardrobes and also offers direct access to a private balcony.



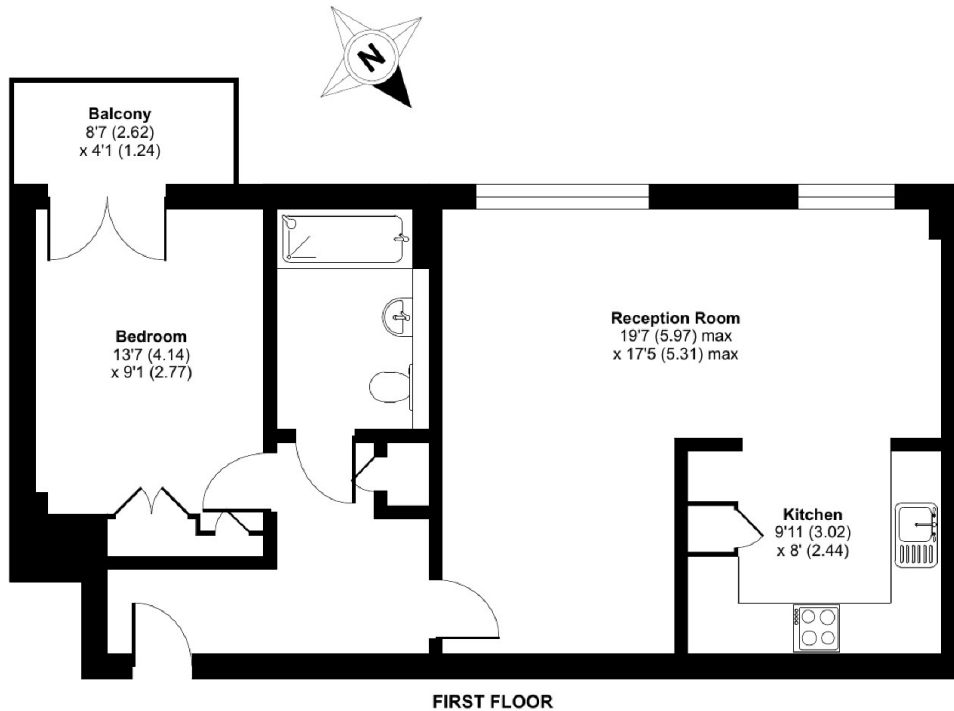


# Peckham Rye, London, SE15

## Williamson Court, Peckham Rye, London, SE15

Approximate Area = 608 sq ft / 56.5 sq m

For identification only - Not to scale



Floor plan produced in accordance with RICS Property Measurement Standards incorporating International Property Measurement Standards (IPMS2 Residential). © nichecom 2024. Produced for Hyde Housing Association. REF: 1130260

# Dexters

Peckham Rye  
2 Barry Parade  
Barry Road  
London

Sales  
020 8742 4146

Energy Rating: B. We aim to make our particulars both accurate and reliable. However they are not guaranteed; nor do they form part of an offer or contract. If you require clarification on any points then please contact us, especially if you're traveling some distance to view. Please note that appliances and heating systems have not been tested and therefore no warranties can be given as to their good working order.



dexters.co.uk