



**Peckham Rye, SE15**

**£625,000**

**Dexters**



## Peckham Rye, SE15

This bright and modern three-bedroom town house has a great well-balanced living space, integral garage and has been neutrally decorated throughout to create a fresh contemporary home.

The practical nature of these modern properties provides an ideal layout for either a professional looking to rent out a room, siblings buying together or for a young family. The ground floor offers the first of three good-size bedrooms and an integral garage leading out to sunny communal gardens. To the first floor a bright L-shaped reception provides plenty of space for a dining area next to the modern well fitted kitchen.

Upstairs, a generous master bedroom and a large single bedrooms which would be perfect as guest room, office or nursery, are served by a stylish Shower room/WC.

Austins Court is a small crescent of houses in a prime position within close proximity to Rye Lane with its eclectic mix of independent bars and restaurants. It is close to the open spaces of Peckham Rye Park with East Dulwich and Lordship Lane easily accessible. Train links are provided via Peckham Rye station for the London Overground and frequent rail links to Victoria, London Bridge, Blackfriars and City Thameslink.

### Features

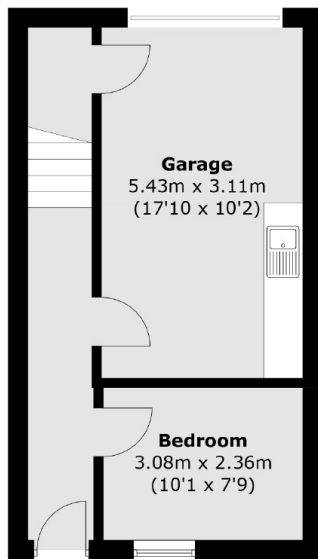
- Three Storey
- Three Bedrooms
- Communal Gardens
- Excellent Condition
- Sought After Location
- Integral Garage



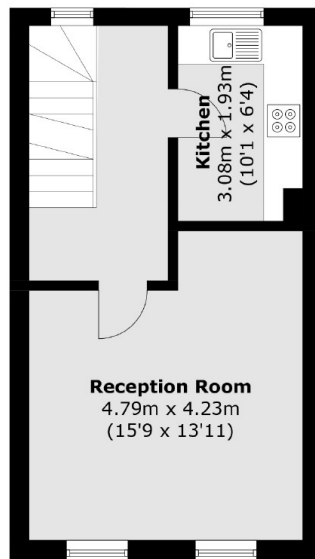




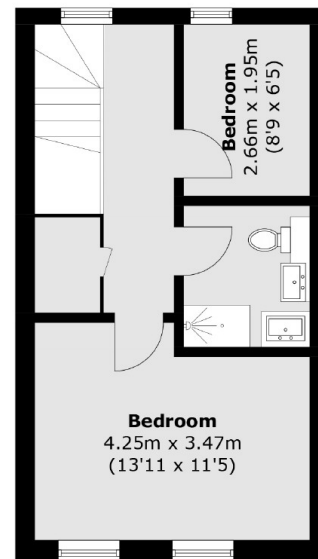
# Peckham Rye, London, SE15



**Ground Floor**



**First Floor**



**Second Floor**

Total area (approx.): 101.4 sq. m (1,091.3 sq. ft)