



Kinsale Road, SE15

£700,000

Occupying the ground floor of this elegant Victorian house, is this cleverly-designed two bedroom garden flat.

Kinsale Road offers a convenient location, perfectly placed for both Bellenden village and Lordship Lane. East Dulwich and Peckham Rye mainline stations are both within walking distance.

Features

- Victorian Conversion
- Ground Floor
- Two Double Bedrooms
- Open Plan Kitchen / Living Room
- Private Section of Garden
- Share Of Freehold

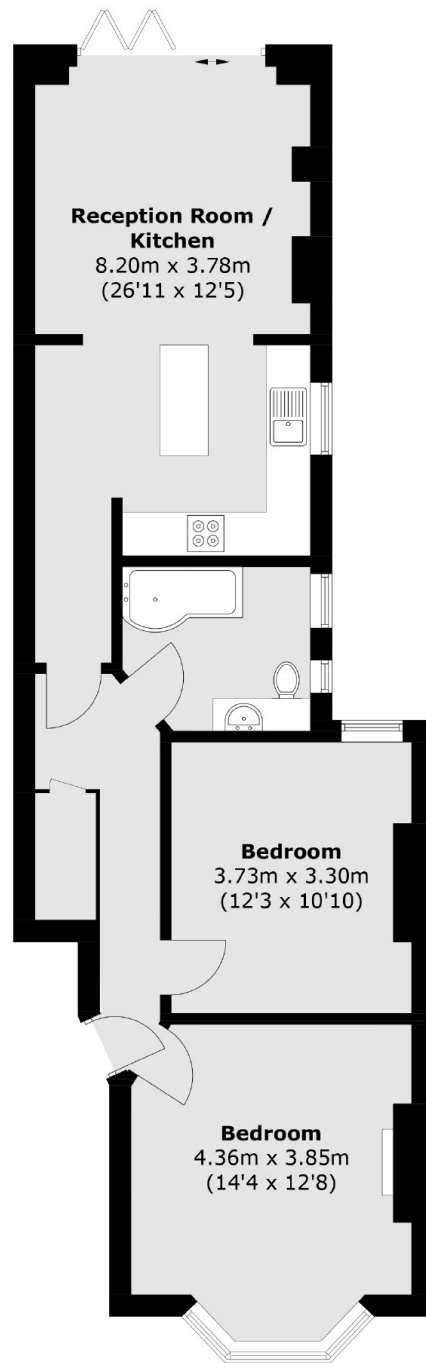


Kinsale Road, SE15

The property comprises two good size double bedrooms, a generous modern family bathroom and an open plan kitchen / living area. Bi-fold doors open out onto a good size garden, which has it's own private section, and could easily be fenced off to offer more privacy if desired. The property is being sold with a share of the freehold.



Kinsale Road, London, SE15



Total area (approx.): 70.1 sq. m (754.5 sq. ft)