



Daniels Road, SE15

£625,000

This two double bedroom 1960's freehold house boasts an impressive living space, two good size double bedrooms and a large south east facing private garden.

Short walk to Nunhead station with connections to Blackfriars, City Thameslink, Farringdon, St. Pancras, Victoria. Peckham Rye with connections to London Bridge. Close to Nunhead High Street with its fantastic array of independent shops and cafés.

Features

- Freehold House
- Two Double Bedrooms
- Large Private Garden
- Good Size Living Area
- Extension Potential STPP
- Close To Transport Links

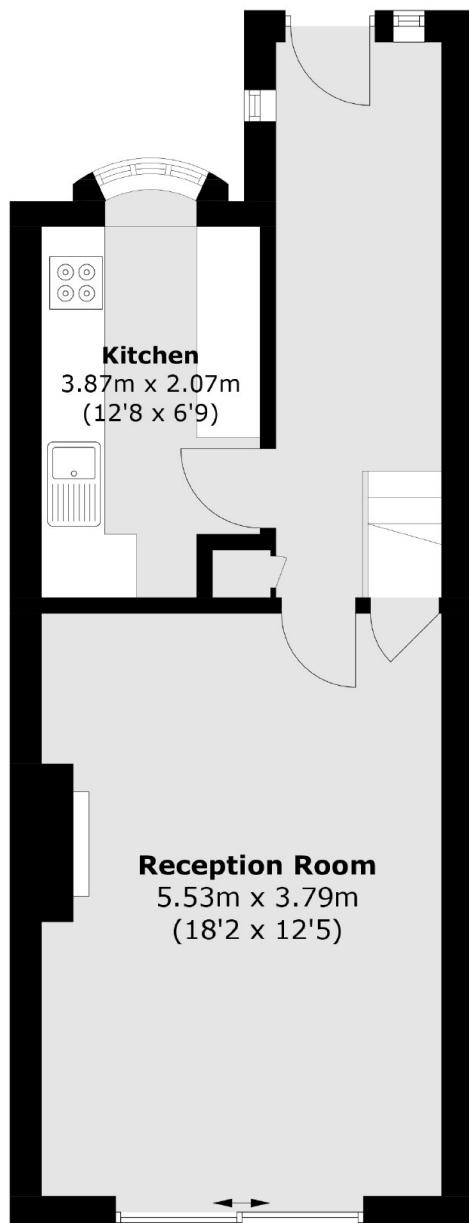


Daniels Road, SE15

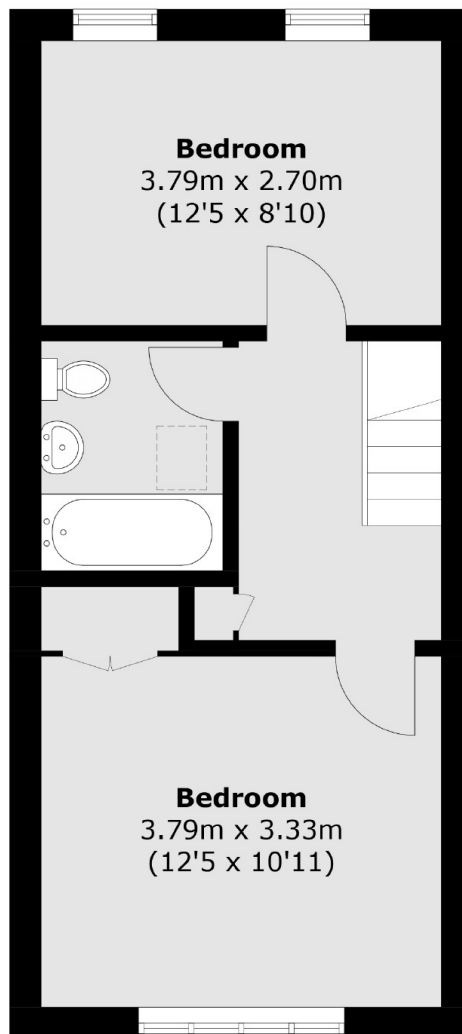
The accommodation, set over two floors, comprises a large living area, separate galley kitchen, two good size bedrooms and a family bathroom. A direct rear access point from the garden puts you moments away from the entrance to the much-loved Nunhead Cemetery. The property also has potential to extend the ground floor STPP.



Daniels Road, London, SE15



Ground Floor



First Floor

Total area (approx.): 73.1 sq. m (786.8 sq. ft)