



Carden Road, SE15

£375,000

This spacious, bright, and airy, top-floor, one double bedroom apartment with large, light reception / dining room and well-equipped kitchen occupies the top floor of an impressive, Victorian building. The property has a share of the freehold and is offered with no forward chain.

Carden Road is a pretty residential street made up of substantial, well-maintained Victorian properties. Perfectly placed for the green spaces of Peckham Rye Park. The flat's position is exceptionally convenient for transport from Nunhead or Peckham Rye stations are both within easy reach for trains to London Bridge, Victoria, Blackfriars, Shoreditch and Clapham Junction.

Features

- Top Floor
- Bright and Airy
- Share Of Freehold
- Popular Road
- Excellent Condition
- No Onward Chain

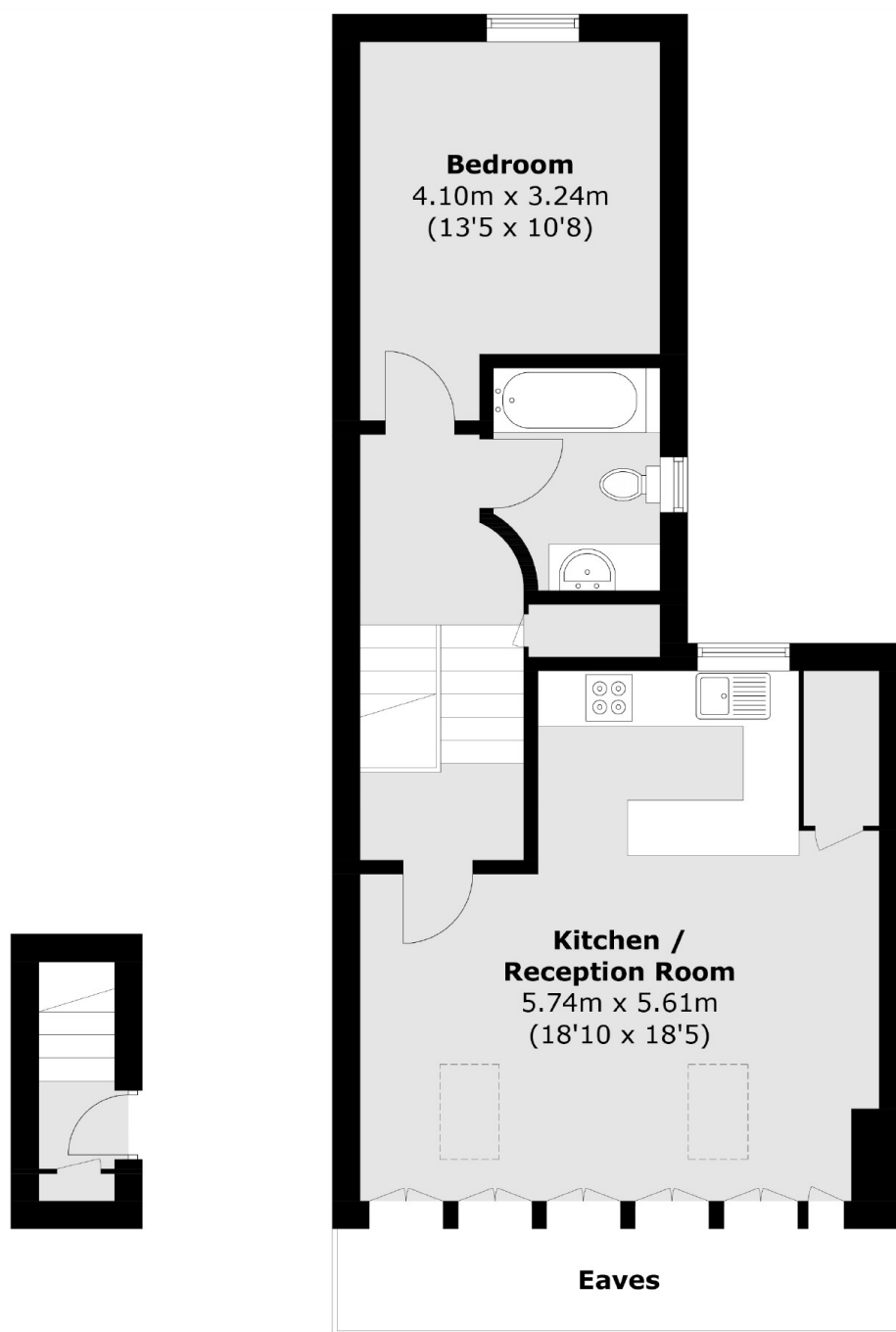


Carden Road, SE15

Arranged around a split-level hallway the flat is attractively decorated in neutral tones throughout. The beautiful openplan kitchen/reception room provides a wonderful entertaining space with windows on both sides and has ample space for a good dining table. The kitchen is well-equipped and fitted with modern contemporary units. The bedroom located to the rear of the property is a good size double served by a stylish bathroom/WC.



Carden Road, London, SE15



Ground Floor

First Floor

Total area (approx.): 56.5 sq. m (608.2 sq. ft)
(Excluding Eaves)

Dexters

Peckham Rye
2 Barry Parade
Barry Road
London
Sales
020 8742 4146

Energy Rating: D. We aim to make our particulars both accurate and reliable. However they are not guaranteed; nor do they form part of an offer or contract. If you require clarification on any points then please contact us, especially if you're traveling some distance to view. Please note that appliances and heating systems have not been tested and therefore no warranties can be given as to their good working order.

 **RICS** | Regulated
Estate Agent
and Letting Agent

dexters.co.uk