



Lanbury Road, SE15

£895,000

A truly stunning, double fronted, semi detached Homes for Heroes house in a lovely quiet residential street in Nunhead SE15.

Lanbury Road is located within walking distance of Nunhead and Brockley stations, with transport links to London Bridge, Blackfriars, Canada Water, Shoreditch and Highbury and Islington. The property also benefits of being in the catchment area of Ivydale school.

Features

- Semi Detached
- Double Fronted
- Large Private Garden
- Three/Four Bedrooms
- Two Bathrooms
- Extended Kitchen/Living Area

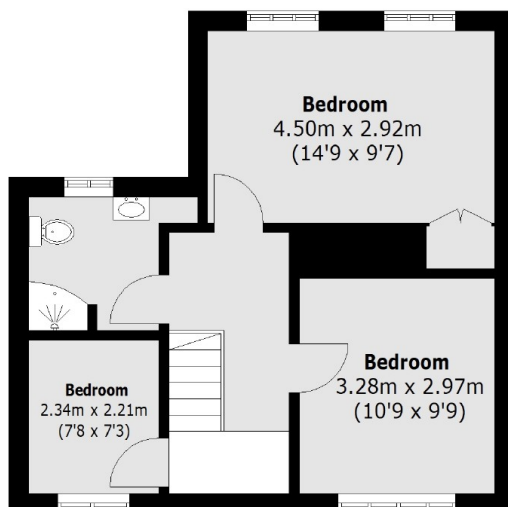


Lanbury Road, SE15

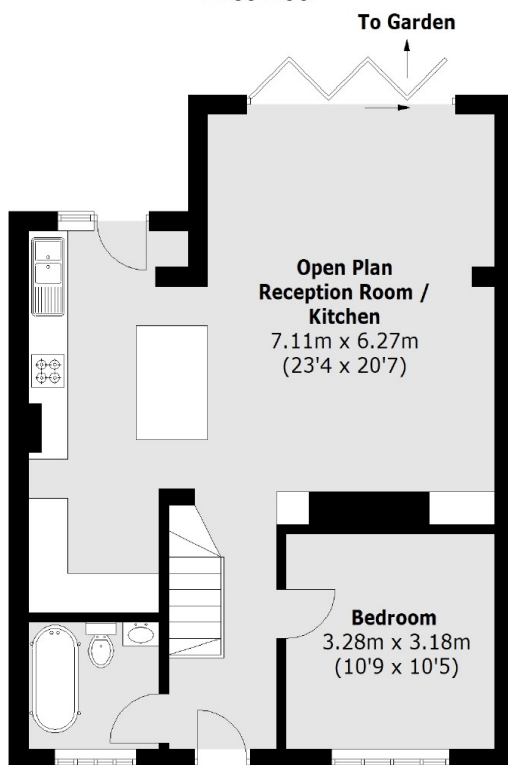
The kitchen has been extended offering a fantastic open plan living and entertaining space, with log burner and bi-fold doors opening onto a large private mature garden, with wooden decking and patio area. There is a bedroom on the ground floor which could also be used as a snug / office space, as well as downstairs bathroom. Upstairs there are a further three bedrooms and family bathroom. The property has been tastefully renovated to a very good standard throughout making for an ideal family home.



Lanbury Road, London, SE15



First Floor



Ground Floor

Total area (approx.): 109.3 sq. m (1176.4 Sq. ft)