



Sumner Road, SE15

£400,000

This cleverly-designed pub conversion is similar in size to many two bedroom flats, with a superb layout measuring just under 600 sq/ft.

Split across two floors with a stunning mezzanine and vaulted ceilings, it is naturally bright and offers fantastic open plan living space.

The property also benefits from having two bathrooms, as well as two communal roof terraces with panoramic views of the London skyline.

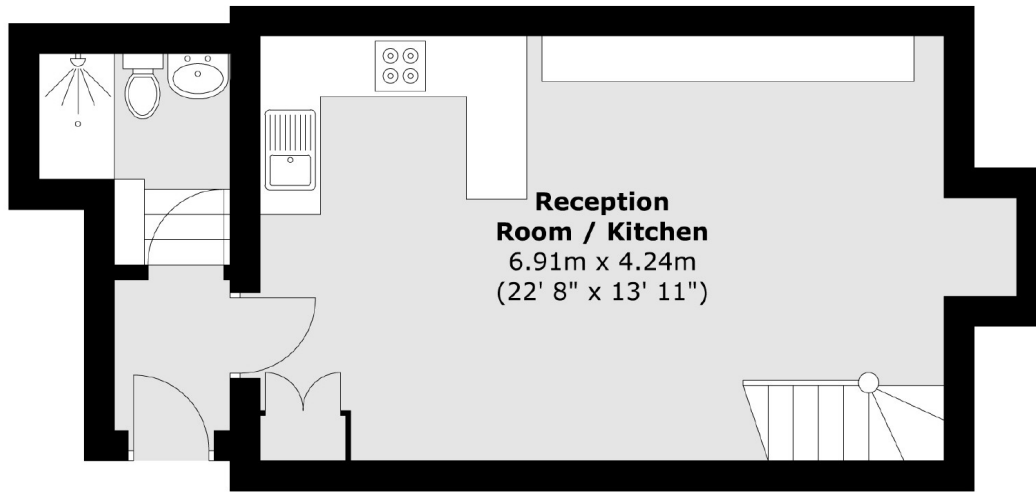
Peckham Rye station is just 10 mins walk away, as are the amenities of Bellenden Road, with a wide array of fantastic restaurants, pubs and coffee shops.

Features

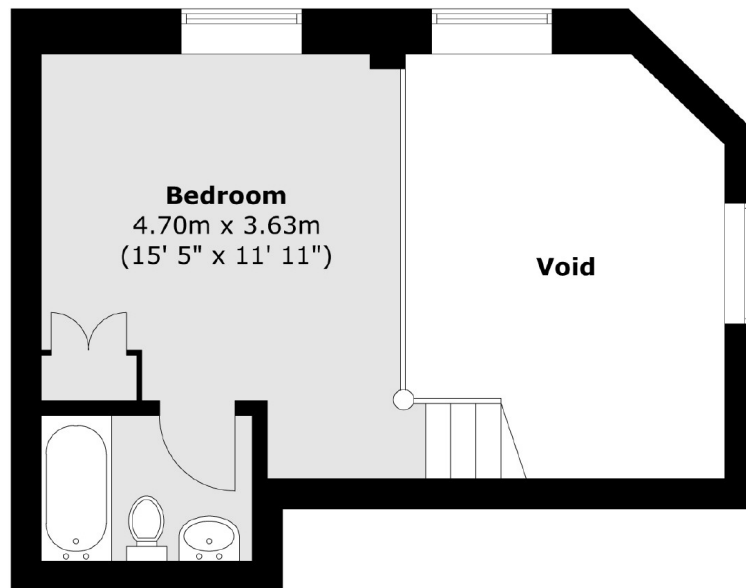
- Converted Pub
- Split Level
- Vaulted Ceilings
- Share Of Freehold
- Two Communal Roof Terraces
- Two Bathrooms

Sumner Road, London, SE15

Lower Ground Floor



Ground Floor



Total area (approx.) : 55.4 sq. m (596 sq. ft)