



## Marmont Road, SE15

### £400,000

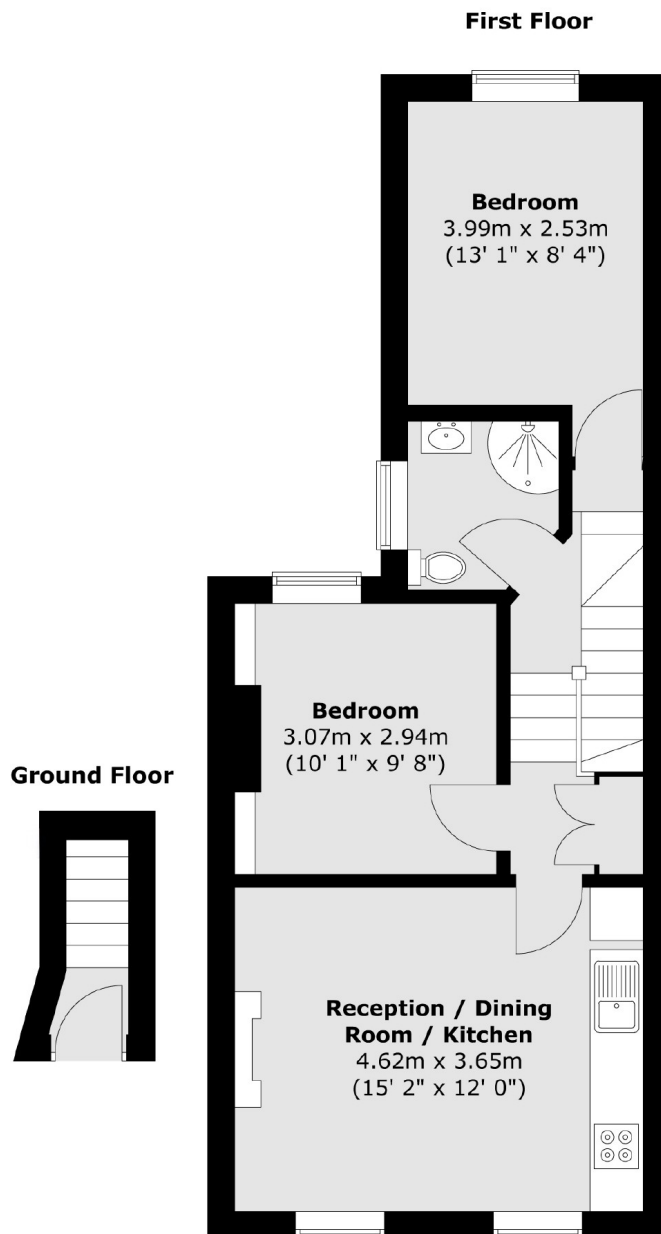
A fabulous two double bedroom, first floor Victorian conversion which receives bundles of natural light. This super flat is well proportioned throughout, has a stylish open plan kitchen/reception and a modern shower room/wc. Sold with no onward chain.

Marmont Road is situated just off Queens Road Peckham with its array of independent cafes and restaurants with Bellenden Road also within walking distance. Queens Road Peckham offers frequent Overground services to Shoreditch High Street and Clapham Junction, with Peckham Rye station providing services to Farringdon and Victoria.

### Features

- Victorian Conversion
- Excellent Condition
- Two Double Bedrooms
- Open Plan Kitchen/Reception
- Sought After Road
- No Onward Chain

# Marmont Road, London, SE15



Total area (approx.) : 48.4 sq. m (521 sq. ft)