



## Kirkwood Road, SE15

£725,000

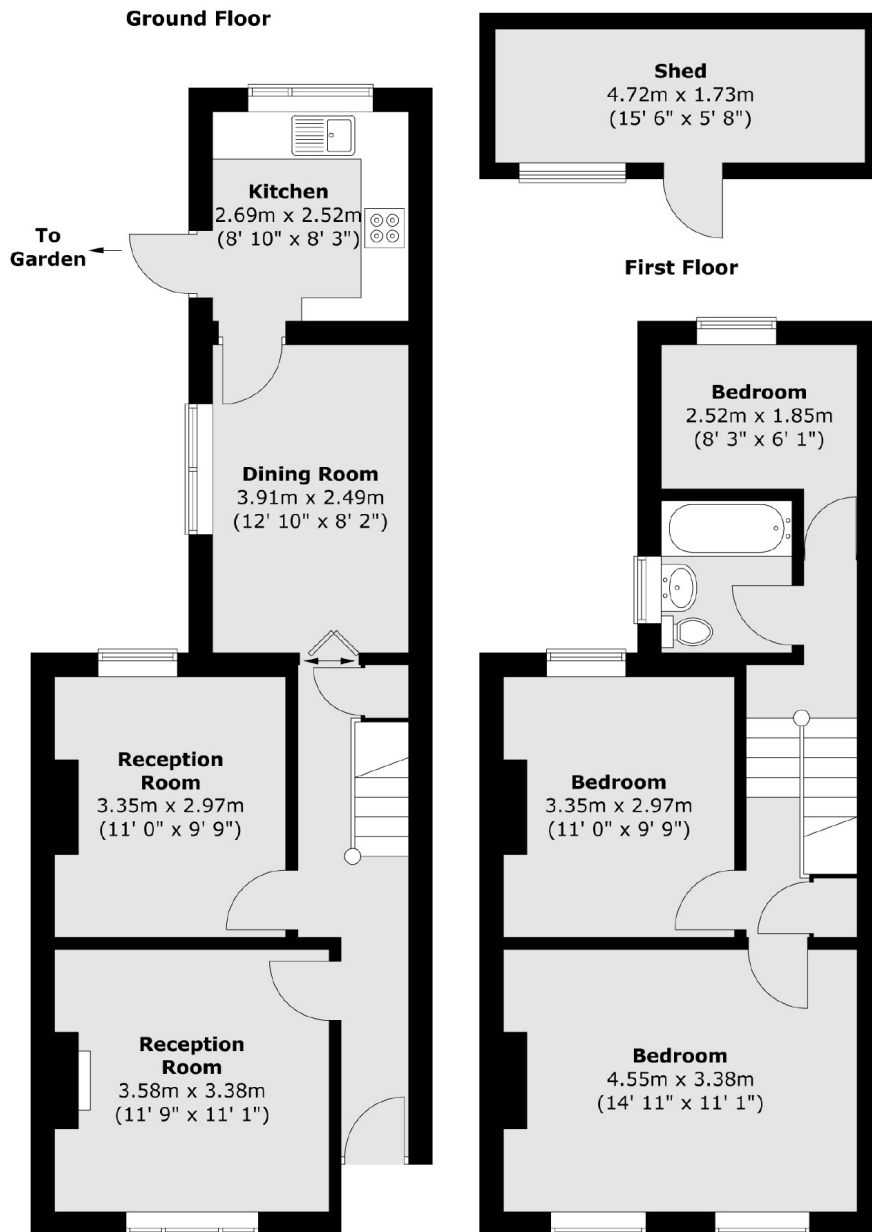
Three bedroom Victorian house with great investment opportunity. Victorian mid terrace house in sought after road in the ever popular area of Nunhead. The house is in need of complete refurbishment, ideal for someone who wants to put their own stamp on a property. There are three double bedrooms, two reception rooms, kitchen/breakfast room leading onto a substantial garden. The property is offered chain free.

Nunhead Station and Queens Road Peckham are both under 10 minutes walk. Nunhead Station for Zone 2 trains to Blackfriars, City Thameslink, Farringdon, St.Pancras and Victoria. Queen's Road Peckham for an 8 minute journey to London Bridge, as well as for London Overground services (Clapham Junction, Canada Water, Shoreditch, Hoxton and Dalston Junction).

### Features

- Chain Free
- Quiet Residential Road
- Close to Transport
- Development Opportunity
- Sought After Schools Nearby
- Victorian Terrace

# Kirkwood Road, London, SE15



Total area (approx.) : 91.1 sq. m (980 sq. ft)  
Total shed area (approx.) : 8.2 sq. m (88 sq. ft)