



Rye Lane, SE15

£415,000

Located on the 6th floor of this modern building, and at just under 745 sq.ft is this spacious, well designed, two double bedroom apartment.

Rye Lane is located off Peckham Rye with a wide variety of dining and shopping options. It is close to the open spaces of Peckham Rye Park with East Dulwich and Lordship Lane easily accessible. Train links are provided via Peckham Rye station for the London Overground and frequent rail links to Victoria, London Bridge, Blackfriars and City Thameslink.

Features

- Two Double Bedrooms
- Open Plan Kitchen/Reception
- Private West Facing Balcony
- Fantastic Views
- Close To Amenities
- Chain Free

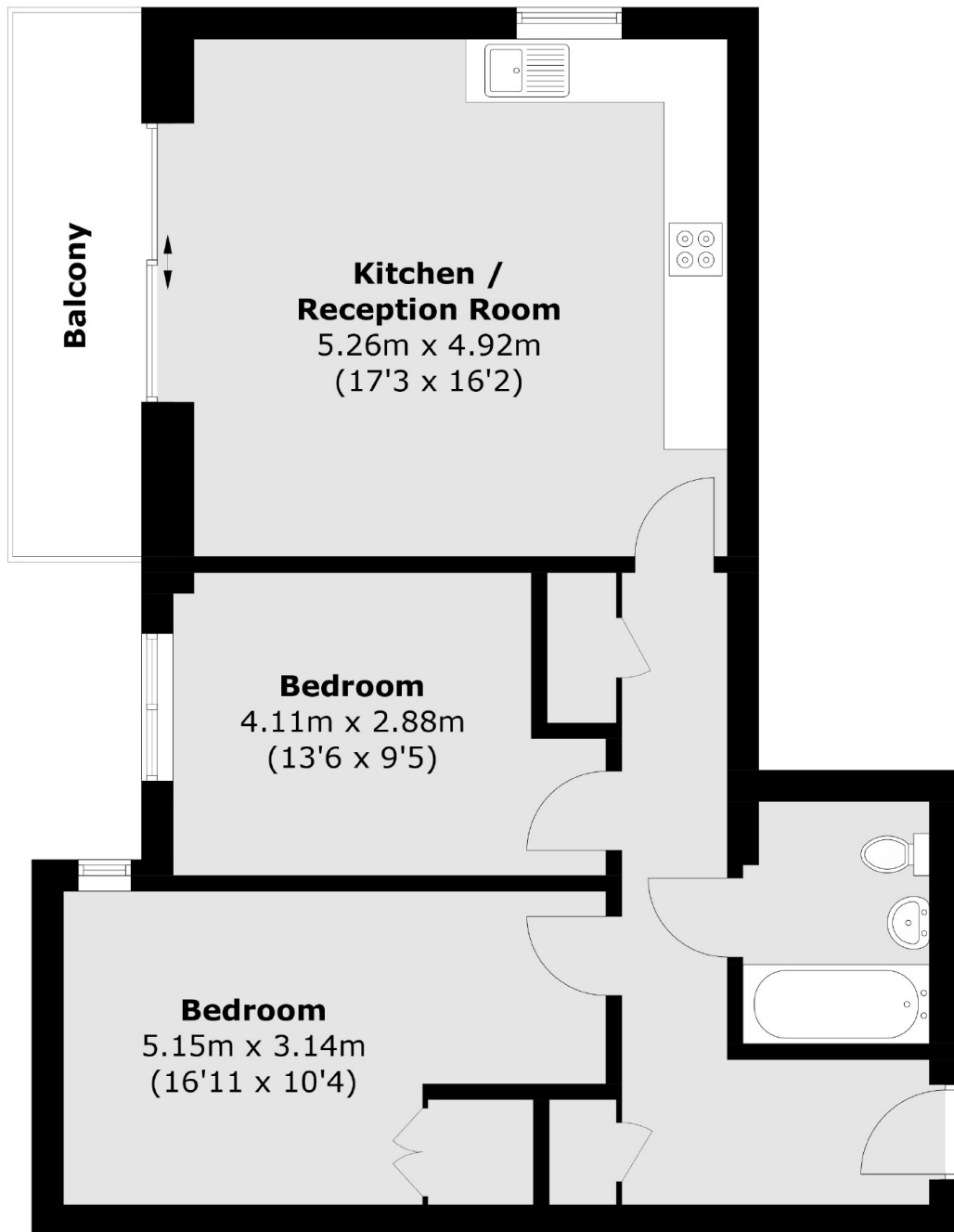


Rye Lane, SE15

The property boasts two good size double bedrooms, fully fitted family bathroom, and a generous open-plan kitchen reception room leading to a good size west facing balcony, offering fantastic views of the London skyline. Its comes with the added benefit of an allocated off street parking space and is sold with no onward chain.



Rye Lane,
London, SE15



Total area (approx.): 69.2 sq. m (744.9 sq. ft)
Balcony area (approx.): 6.3 sq. m (67.8 sq. ft)

Dexters

Peckham Rye
2 Barry Parade
Barry Road
London
Sales
020 8742 4146

Energy Rating: C. We aim to make our particulars both accurate and reliable. However they are not guaranteed; nor do they form part of an offer or contract. If you require clarification on any points then please contact us, especially if you're traveling some distance to view. Please note that appliances and heating systems have not been tested and therefore no warranties can be given as to their good working order.

 **RICS** | Regulated
Estate Agent
and Letting Agent

dexters.co.uk