



## Tresco Road, SE15

£800,000

Redesigned and extended, with a modern finish throughout, this gorgeous, Victorian half-house represents an outstanding opportunity in a sought after Nunhead Location.

Tresco Road is a very popular and convenient residential street in the heart of Nunhead with its local independent shops on your door step. Nunhead train station provides overground connections to London Bridge, Blackfriars and the City with the green expanses of Peckham Rye just around the corner.

### Features

- Victorian Terrace
- Two Double Bedrooms
- Open Plan Kitchen / Diner
- Good Size Private Garden
- Sought After Road
- Close To Amenities



## Tresco Road, SE15

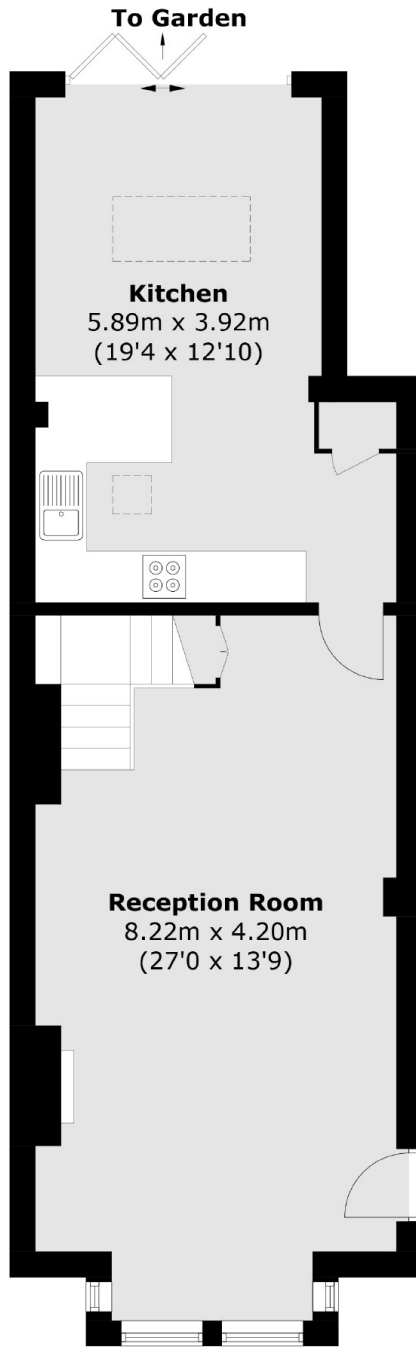
Downstairs the entertaining space is wonderful, with a large through reception room featuring ceiling corning, sash windows and feature fireplace, whilst the rear has been extended to incorporate a well fitted kitchen with handy breakfast bar open plan to a bright dining area providing an excellent family living space.

Triple Bi-fold doors open through to a stunning sunny garden including a paved patio leading onto to the lawn, which in turn leads to a secluded and intimate area to relax and entertain.

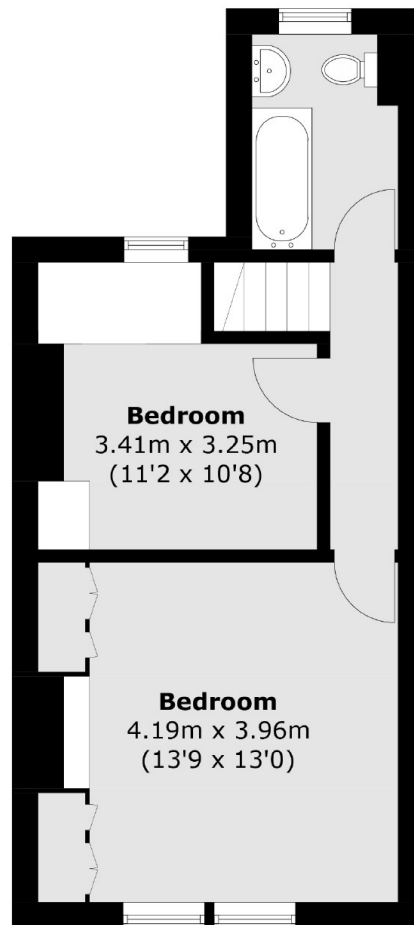
Upstairs the two bedrooms are of good size, the main bedroom has painted floorboards and includes fitted wardrobes the second with a raised seating / snug area, both served by a modern bathroom/ wc



# Tresco Road, London, SE15



**Ground Floor**



**First Floor**

Total area (approx.): 91.6 sq. m (985.9 sq. ft)