



## Peckham Grove, SE15

£300,000

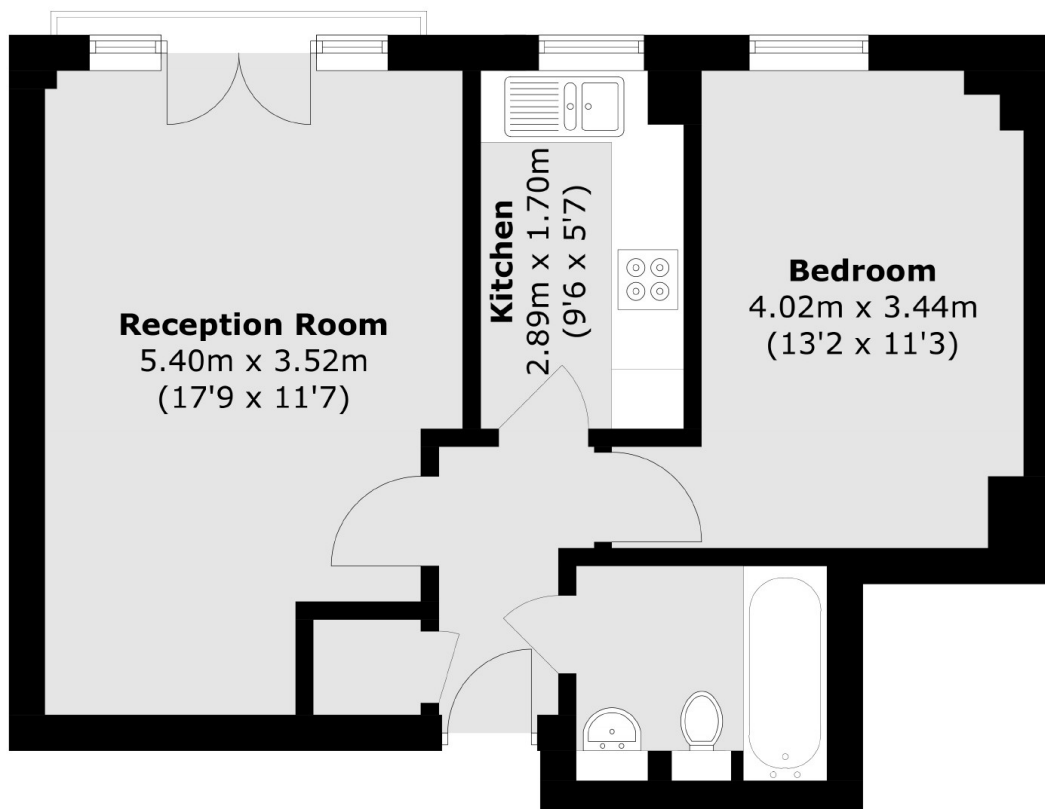
Located on the first floor of this modern block is this delightful & bright one bedroom apartment. The property comprises a good size double bedroom, large living / dining room with Juliet balcony, separate kitchen and fully fitted bathroom. An ideal purchase for a first time buyer.

Conveniently located within easy reach of Peckham Rye Station, providing swift connections to key London destinations such as London Bridge and Victoria. The area boasts an array of local amenities including trendy cafés, vibrant markets, and excellent restaurants

### Features

- One Bedroom
- First Floor
- Separate Kitchen
- Long Lease
- Close To Burgess Park
- Perfect First Time Buy

# Peckham Grove, London, SE15



Total area (approx.): 43.4 sq. m (467.1 sq. ft)