



## Canning Cross, SE5

£850,000

Forming part of the Camberwell Grove conservation area, this generous and versatile home occupies a supremely quiet and prestigious position along a part-cobbled through road off Grove Lane.

Canning Corss is set within the Camberwell Grove Conservation Area. Peckham Rye and Denmark Hill Stations are close by offering frequent links into the City and beyond. The property is also placed perfectly for Bellenden Road with its array of independent shops, bars and restaurants and many outstanding local schools.

### Features

- Three Storey
- Terrace / Garden
- Open Plan Kitchen
- Bright Reception
- Three Bedrooms
- Sough After Location



## Canning Cross, SE5

Accommodation is spacious, bright, well-designed and fitted to a good specification throughout. The ground floor has a wonderfully large and bright reception area with a smart open-plan kitchen providing plenty of space for dining and entertaining. There is also a useful cloakroom/WC.

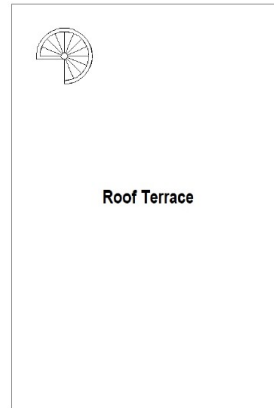
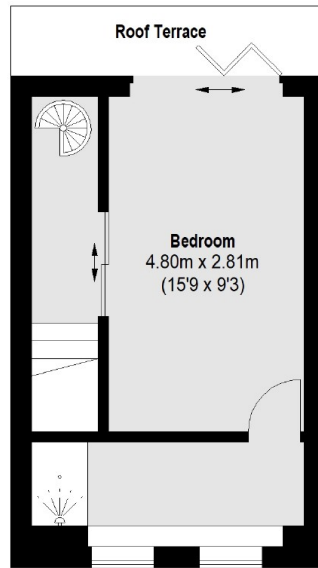
Upstairs has an excellent balance of bedrooms and bathrooms with two doubles served by a modern family bathroom on the first floor, whilst the top floor provides a wonderful master suite with double bedroom and ensuite shower. It benefits from a tremendous amount of natural light from bifold doors opening directly to a private balcony,

Further outside space comes by way of a fabulous roof terrace which is fully decked, offers delightful views and is accessed via a large skylight window off the hallway meaning the central point, usually quite dark on terraced properties, is also flooded with natural light.

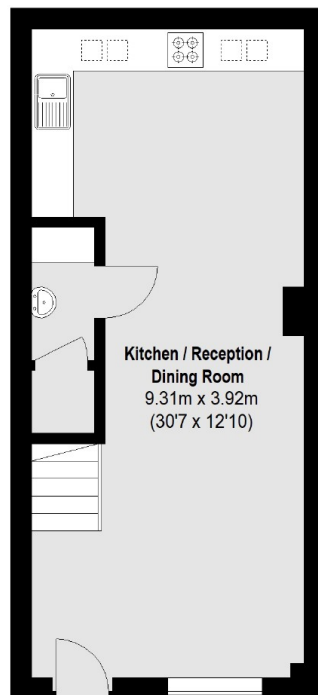




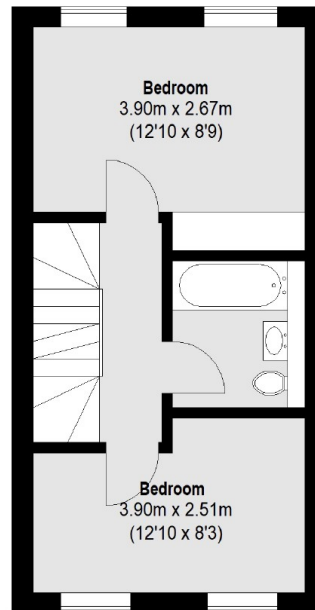
# Canning Cross, London, SE5



Second Floor



Ground Floor



First Floor

Total area (approx.): 93.63 sq. m (1008 Sq. ft)  
Roof Terrace : 27.12 sq. m (292 Sq. ft)