



Cheltenham Road, SE15

£525,000

Arranged over two floors and with the space and a feel of a house, this well-designed, four-bedroom maisonette has a superb layout measuring over 1000 square feet. Presented in excellent decorative order, it is naturally bright with fantastic living space and a delightful private front garden.

The open spaces of Peckham Rye Park are on your door step with Nunhead and East Dulwich's town centres both within easy reach providing an array of shops restaurants and bars. Frequent rail links can be found from Nunhead and Peckham Rye stations.

Features

- Split-Level Maisonette
- Private Entrance
- Over 1000 Sq FT
- Four bedrooms
- Naturally Bright
- Sought After Location

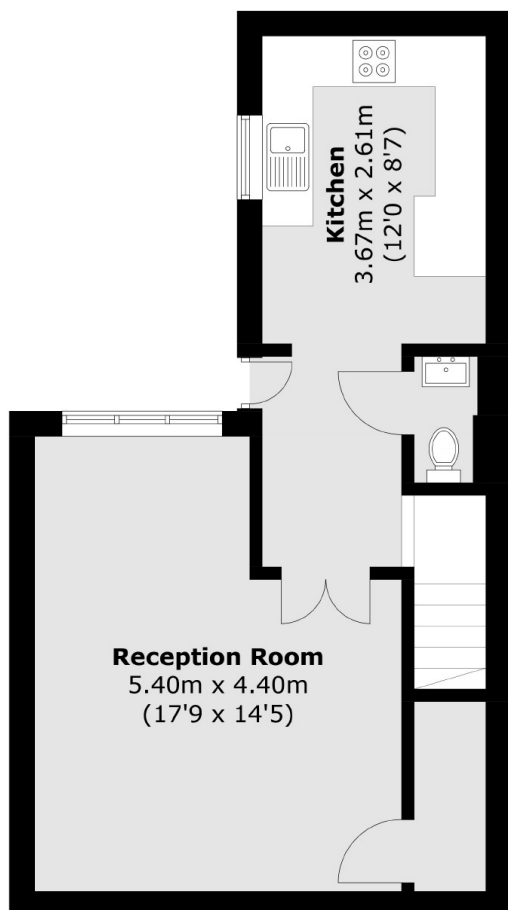


Cheltenham Road, SE15

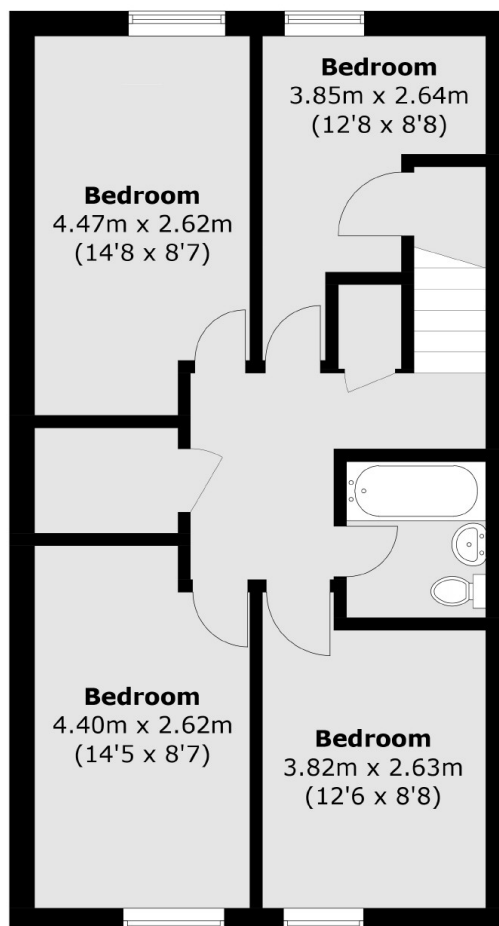
With one of the preferred quieter locations towards the end of development, the main reception area has both generous living and dining areas and with floor to ceiling windows over looks the paved front garden offering a great outside entertaining space. A fully fitted kitchen has ample storage whilst there is a useful downstairs WC. Upstairs four good-size bedrooms are arranged around a large landing with two storage cupboards and are well served by a modern bathroom/WC.



Cheltenham Road, London, SE15



Ground Floor



First Floor

Total area (approx.): 97.0 sq. m (1,044.1 sq. ft)