



## Athenlay Road, SE15

£475,000

Occupying the first floor of this handsome Victorian building is this spacious two bedroom flat.

Bright and beautifully-designed, this two bedroom, first floor Victorian conversion flat has been stylishly modernised and boasts a generous eat-in kitchen, a large front reception room plus outdoor terrace.

Located close to Nunhead and Crofton Park stations for trains to Blackfriars, City Thameslink, Farringdon, St Pancras and Victoria. Brockley and Honor Oak Overground stations are also within easy reach.

Peckham Rye and Nunhead Cemetery are a few minutes walk away with Ivydale primary school also on your doorstep.

### Features

Period Conversion  
First Floor  
Outside Terrace  
Two Bedrooms  
Eat In Kitchen  
Desirable Location

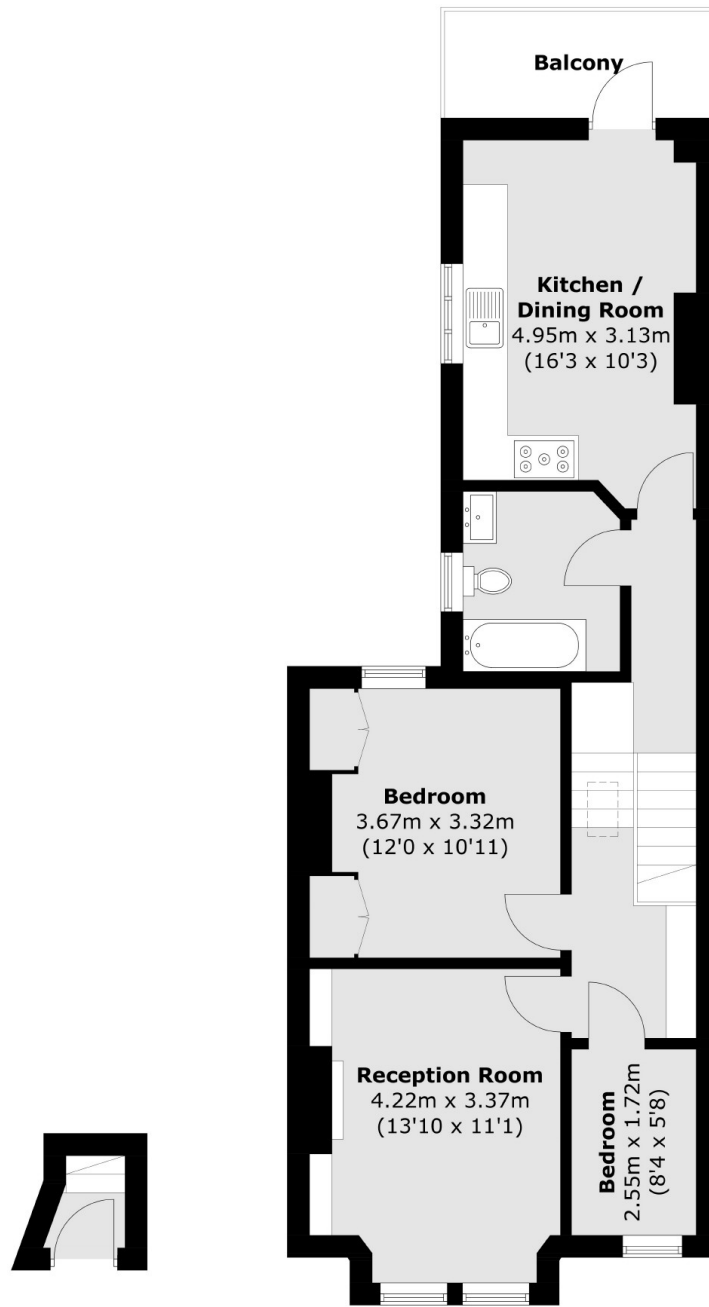


Athenlay Road, SE15





Athenlay Road,  
London, SE15



**Ground Floor**

**First Floor**

Total area (approx.): 64.0 sq. m (688.9 sq. ft)  
Balcony : 5.2 sq. m (56.0 sq. ft)

**Dexters**

Peckham Rye  
2 Barry Parade  
Barry Road  
London  
Sales  
020 8742 4146

Energy Rating: D. We aim to make our particulars both accurate and reliable. However they are not guaranteed; nor do they form part of an offer or contract. If you require clarification on any points then please contact us, especially if you're traveling some distance to view. Please note that appliances and heating systems have not been tested and therefore no warranties can be given as to their good working order.

 **RICS** | Regulated  
Estate Agent  
and Letting Agent

[dexters.co.uk](http://dexters.co.uk)