



Athenlay Road, SE15

£500,000

Occupying the first floor of this handsome Victorian building is this spacious two bedroom flat.

Located close to Nunhead and Crofton Park stations for trains to Blackfriars, City Thameslink, Farringdon, St Pancras and Victoria. Brockley and Honor Oak Overground stations are also within easy reach. Peckham Rye and Nunhead Cemetery are a few minutes walk away with Ivydale primary school also on your doorstep.

Features

Period Conversion
First Floor
Outside Terrace
Two Bedrooms
Eat In Kitchen
Desirable Location

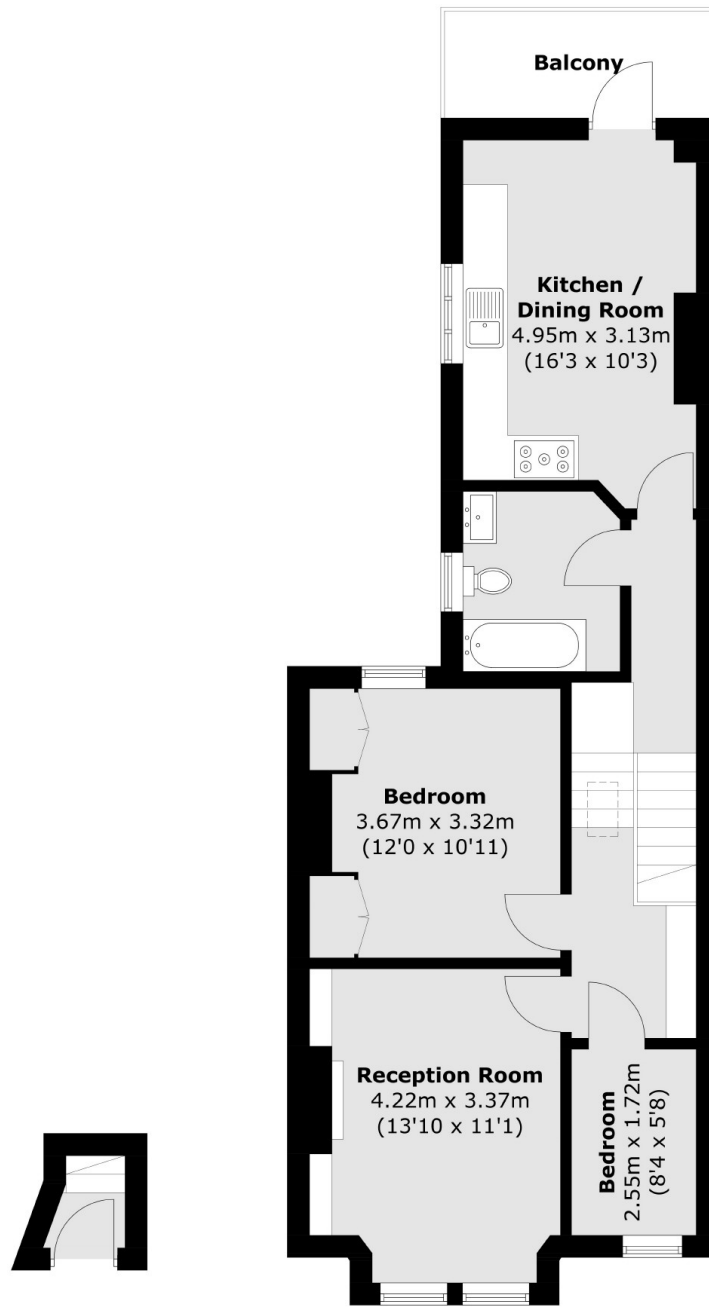


Athenlay Road, SE15

Bright and beautifully-designed, this two bedroom, first floor Victorian conversion flat has been stylishly modernised and boasts a generous eat-in kitchen, a large front reception room plus outdoor terrace.



Athenlay Road,
London, SE15



Ground Floor

First Floor

Total area (approx.): 64.0 sq. m (688.9 sq. ft)
Balcony : 5.2 sq. m (56.0 sq. ft)

Dexters

Peckham Rye
2 Barry Parade
Barry Road
London
Sales
020 8742 4146

Energy Rating: TBC. We aim to make our particulars both accurate and reliable. However they are not guaranteed; nor do they form part of an offer or contract. If you require clarification on any points then please contact us, especially if you're traveling some distance to view. Please note that appliances and heating systems have not been tested and therefore no warranties can be given as to their good working order.

 **RICS** | Regulated
Estate Agent
and Letting Agent

dexters.co.uk