



Peckham Hill Street, SE15

£875,000

Dexters



Peckham Hill Street, SE15

This three bedroom semi-detached Georgian house has been superbly redesigned and renovated to an excellent standard throughout. It offers a fantastic and versatile modern layout in a Central Peckham Location.

The side entrance hall leads directly into the first of two elegant reception rooms which have been knocked through to form one very large and beautiful double reception room and providing plenty of space for dining. Steps to the rear lead down to the galley style kitchen with large sky light creating good flow. Additionally, there is a good size cellar and ground floor WC.

The rear garden has been fully landscaped is an excellent size and has a lovely decked terrace leading down to a paved dining area with raised shrub borders.

The upper two floors provide three spacious double bedrooms, two with fitted wardrobes, including a huge front main bedroom on the first floor. All three are served by a well-appointed bathroom.

Peckham Hill Street is perfectly situated for frequent rail links from Peckham Rye station. Peckham Rye and Bellenden Road high streets are within easy reach and offer access to an array of independent shops, bars and restaurants.

Features

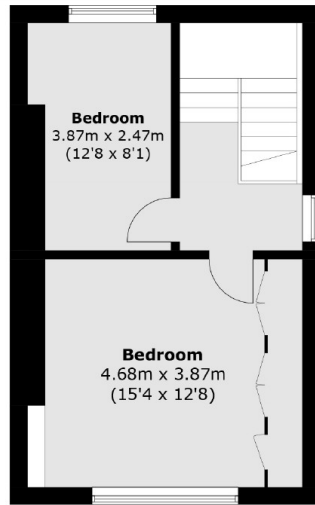
- Semi Detached
- Three Storey
- Through Reception
- Large Cellar
- Landscaped Garden
- No Onward Chain



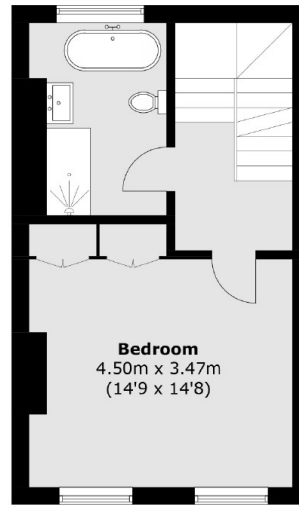




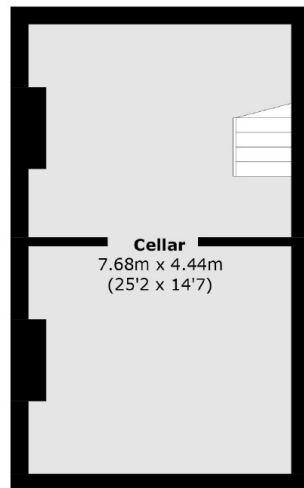
Peckham Hill Street, London, SE15



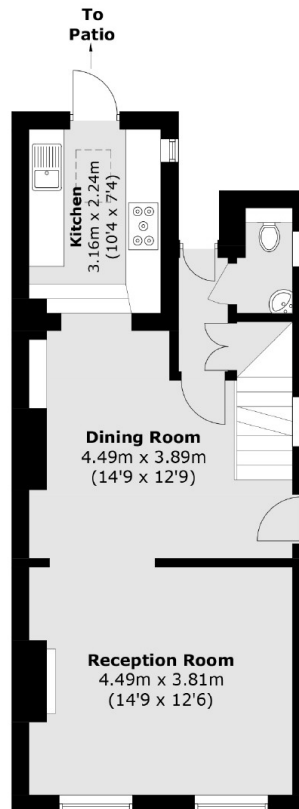
Second Floor



First Floor



Basement



Ground Floor

Total area (approx.): 155.2 sq. m (1,670.5 sq. ft)