



Borland Road, SE15

£775,000

This bright terraced Victorian house has been neutrally decorated throughout to create a lovely family home. Superbly located on a popular residential street, it offers three bedrooms, two receptions and a pretty garden.

Borland Road is perfectly placed for Nunhead station with frequent trains to Victoria, Blackfriars, City Thameslink, Farringdon and St Pancras. The green open spaces of Telegraph Hill Parks and Peckham Rye are all within easy reach.

Features

- Victorian House
- Two Reception Rooms
- Pretty Garden
- Three Bedrooms
- Well Cared For
- Sought After Road



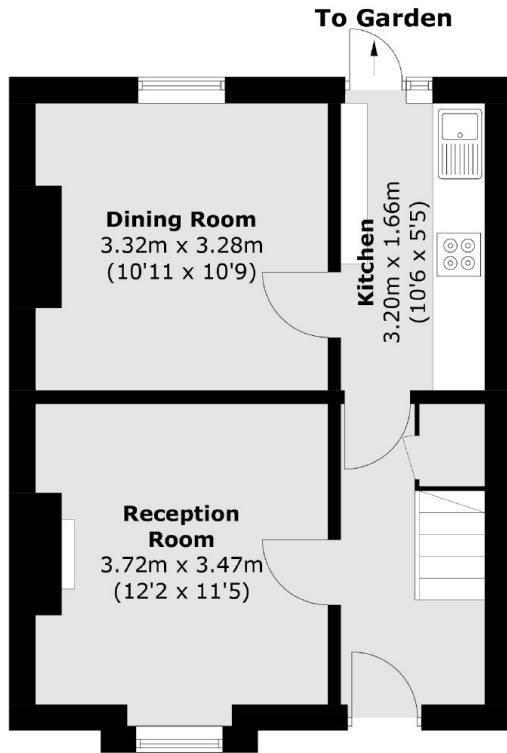
Borland Road, SE15

This light and bright house provides superb flexible living space which can be further extended subject to the usual planning consents. The ground floor offers an inviting entrance hall leading to two separate receptions and a galley kitchen opening to an established garden with paved patio shrub borders and useful storage shed.

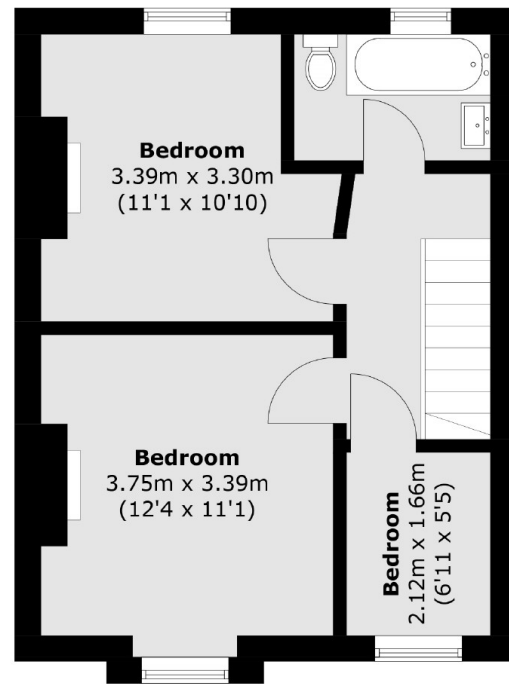
Upstairs, there are two generous double bedrooms with feature fireplaces. The third bedroom could be ideal as a study or nursery. All three served by a family bathroom/wc.



Borland Road,
London, SE15



Ground Floor



First Floor

Total area (approx.): 71.9 sq. m (773.9 sq. ft)