



Peckham Rye, SE15

£850,000

A truly unique detached house, nestled in a private and gated community in a secluded location within the heart of Peckham Rye.

On the ground floor is a very spacious living / dining room with bay window, There is a downstairs W.C and fully functional modern kitchen, with gas hob, breakfast bar and utility cupboard.

Parquet oak flooring and double glazed windows can be found throughout. The garden is a very good size and is south facing, and has rear access where the allocated parking space can be found. There is also a fantastic studio which is a large self contained unit and includes a wall bed for guests, bathroom with shower & WC

Features

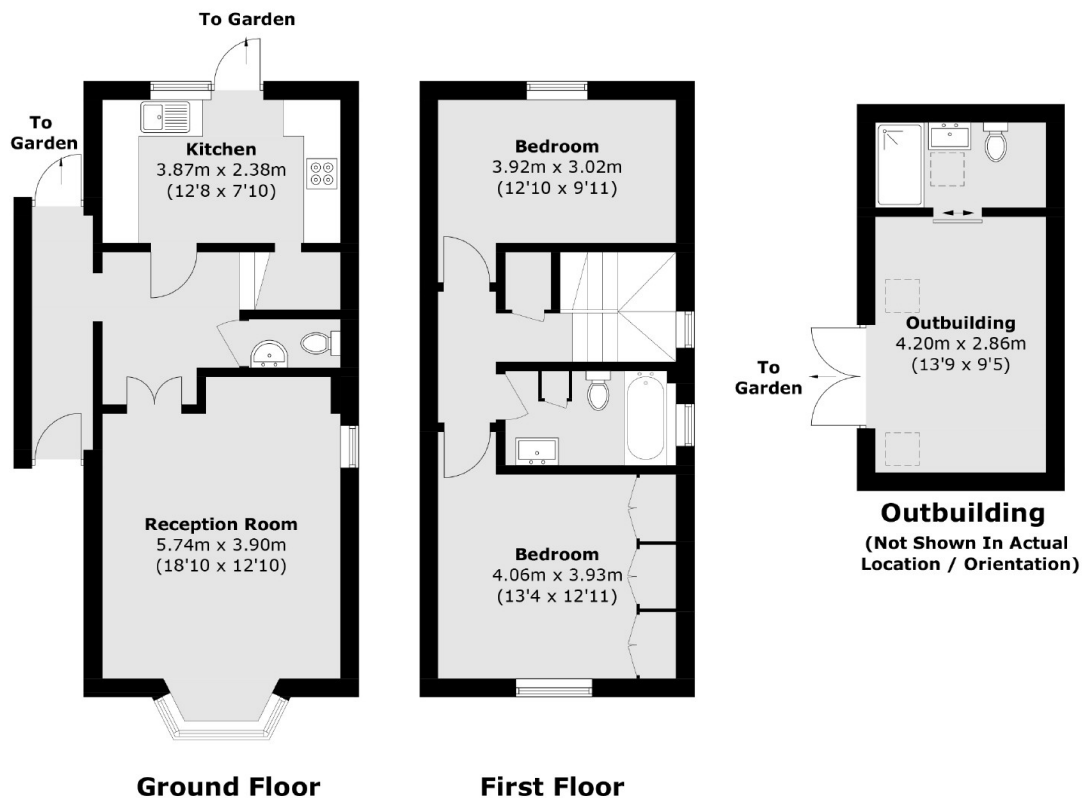
- Detached
- South Facing Garden
- Self Contained Studio
- Allocated Parking
- Extension Potential STPP
- Desirable Location



Peckham Rye, SE15



Peckham Rye, London, SE15



Total area (approx.): 79.9 sq. m (860.1 sq. ft)
Outbuilding: 16.3 sq. m (175.4 sq. ft)