



Bushey Hill Road, SE5

£1,075,000

This beautifully-proportioned and smartly-finished, 1930s family house with fabulous studio room extension and wonderful open-plan living space is offered with no chain. Providing over 1500 sq ft of space, it is in a highly-sought-after and residential road.

Bushey Hill Road is a tree lined sought after street perfectly situated for frequent rail links from Peckham Rye station. Peckham Road and Bellenden Road are within easy reach and offer access to an array of independent shops, bars and restaurants.

Features

- Fully Extended
- Open-Plan Kitchen
- Five Bedrooms
- Two Bathrooms
- Excellent Decorative Order
- Sought After Road



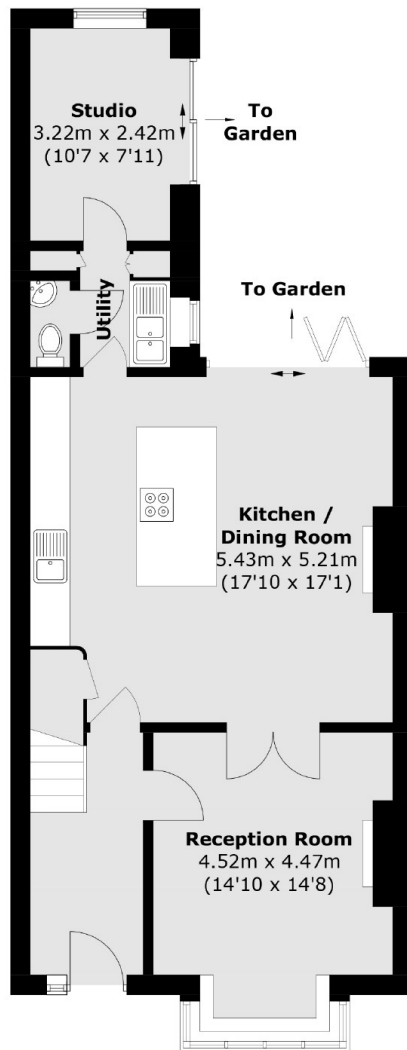
Bushey Hill Road, SE5

The house is approached through a small front garden and into an attractive entrance hall. The front reception room with bay window and beautiful fireplace, now has double doors through to the remainder of the ground floor which has been completely re-invented with a bright open-plan feel. It has been cleverly zoned with an excellent dining area, a well-fitted, kitchen with central island and a further utility area which leads into an adjoining studio by the garden. All of it receiving in a wonderful amount of natural light from bi-fold doors opening onto the garden.

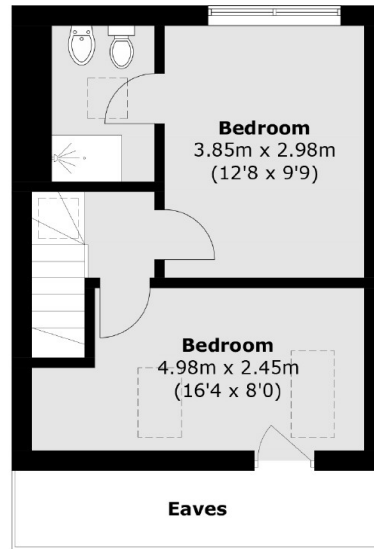
Upstairs, the lovely proportions continue, with three bedrooms and family bathroom on the top floor with two further bedrooms and ensuite within the converted loft space.



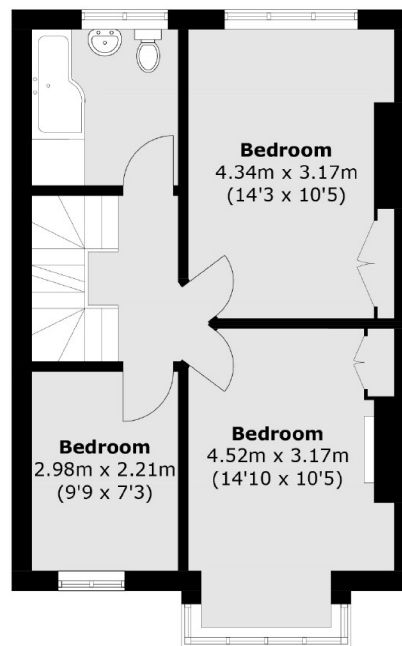
Bushey Hill Road, London, SE5



Ground Floor



Second Floor



First Floor

Total area (approx.): 140.5 sq. m (1512.3 sq. ft)
(Excluding Eaves)