



Hichisson Road, SE15

£925,000

Reavailable this charming three bedroom terraced house in a quiet residential road in Nunhead, SE15.

Ideally located close to Nunhead station for Zone 2 trains to Blackfriars, City Thameslink, Farringdon, St Pancras and Victoria. Peckham Rye station is one stop away for London Bridge services and Overground links. Crofton Park, Brockley and Honor Oak stations are also in easy reach. Peckham Rye and Nunhead Cemetery are a few minutes walk away with Ivydale primary also on your doorstep.

Features

- Three Bedrooms
- Quiet Residential Road
- Garden Studio/Office
- Two Bathrooms
- Close To Sought After Schools
- Utility Room

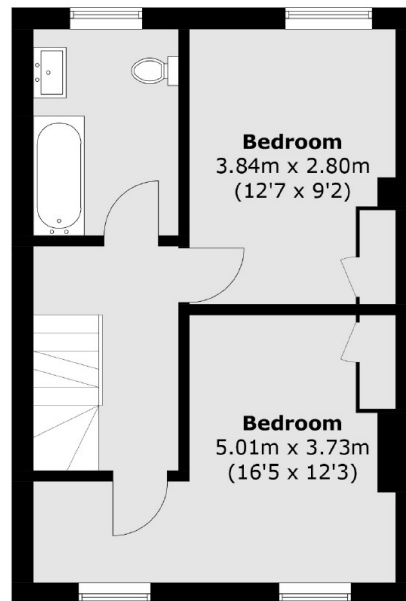
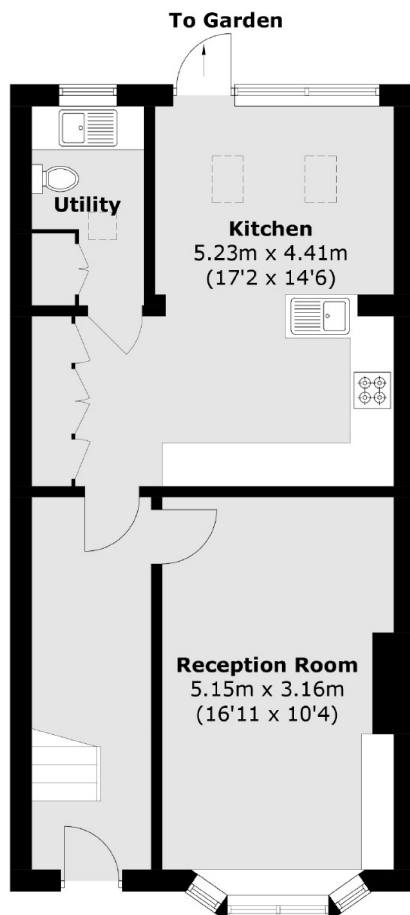
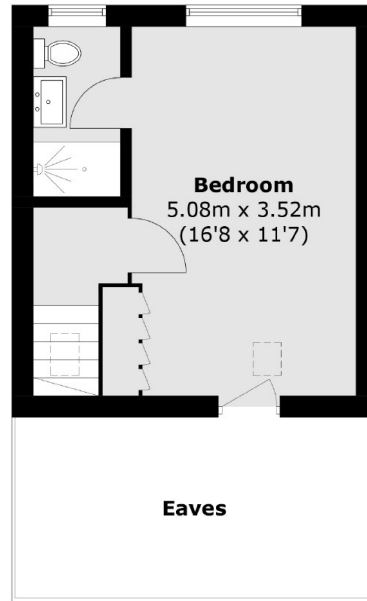
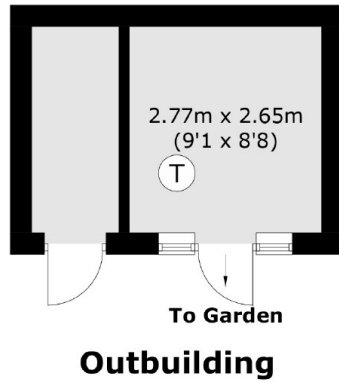


Hichisson Road, SE15

Downstairs there is a bright and spacious reception room, and a beautifully extended kitchen with separate utility room, leading out to a good size south facing garden with fantastic studio room/office which has underfloor heating. On the first floor are two double bedrooms and the loft has been converted to include the master bedroom with en-suite bathroom.



Hichisson Road, London, SE15



Ground Floor

First Floor

Total area (approx.): 114.7 sq. m (1,234.6 sq. ft)
(Excluding Eaves)

Outbuilding (approx.): 11.6 sq. m (124.9 sq. ft)