



## Athenlay Road, SE15

£575,000

An incredibly spacious and naturally light three double bedroom maisonette with a floor area over 1000 Sq. Ft and a superb private garden.

Athenlay Road is a sought after residential street Ideally located close to Nunhead station for Zone 2 trains to Blackfriars, City Thameslink, Farringdon, St Pancras and Victoria. Peckham Rye station is one stop away for London Bridge services and Overground links. Peckham Rye and Nunhead Cemetery are a few minutes walk away with Ivydale primary also on your doorstep.

### Features

- Split-Level Maisonette
- Three Bedrooms
- Private Garden
- Eat-In Kitchen
- Extended Lease
- Private Entrance



## Athenlay Road, SE15

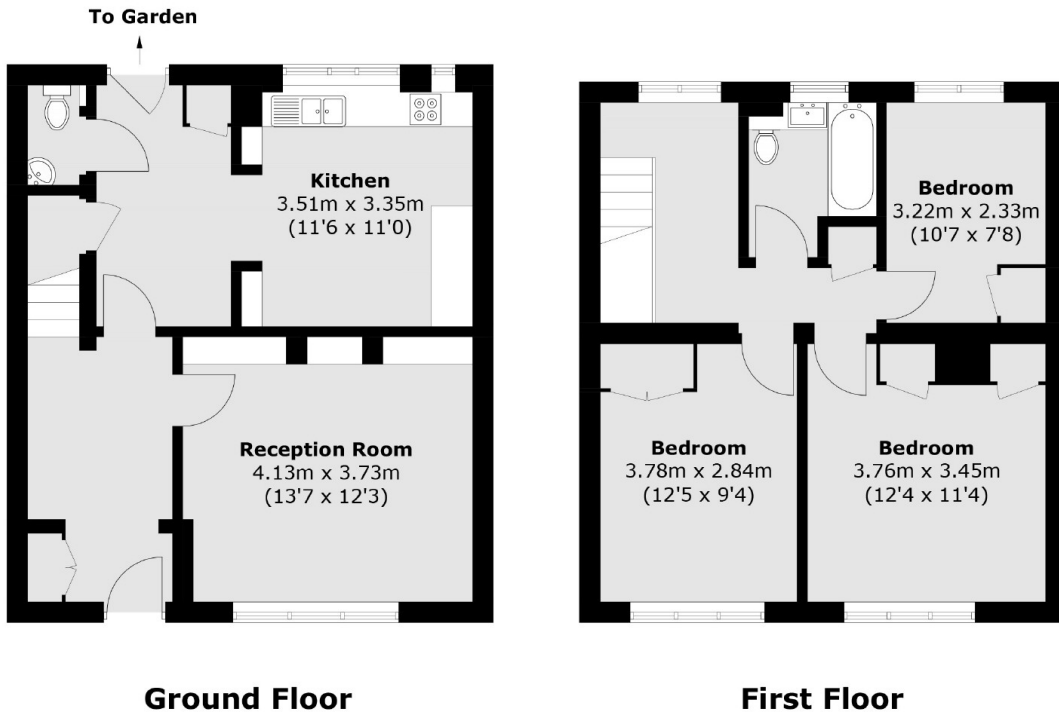
Arranged over two floors the entertaining space comprises separate open-plan kitchen/ breakfast room with a useful downstairs WC, this together with a separate large front reception room creates a great ground floor.

The first floor has three good-size bedrooms all with fitted wardrobes and served by a large family bathroom/wc.

Outside, the garden features a paved patio leading to a lawn with flowerbeds and mature shrub borders. It also offers separate street access.



# Athenlay Road, London, SE15



Total area (approx.): 95.4 sq. m (1,026.8 sq. ft)