



## Consort Road, SE15

£375,000

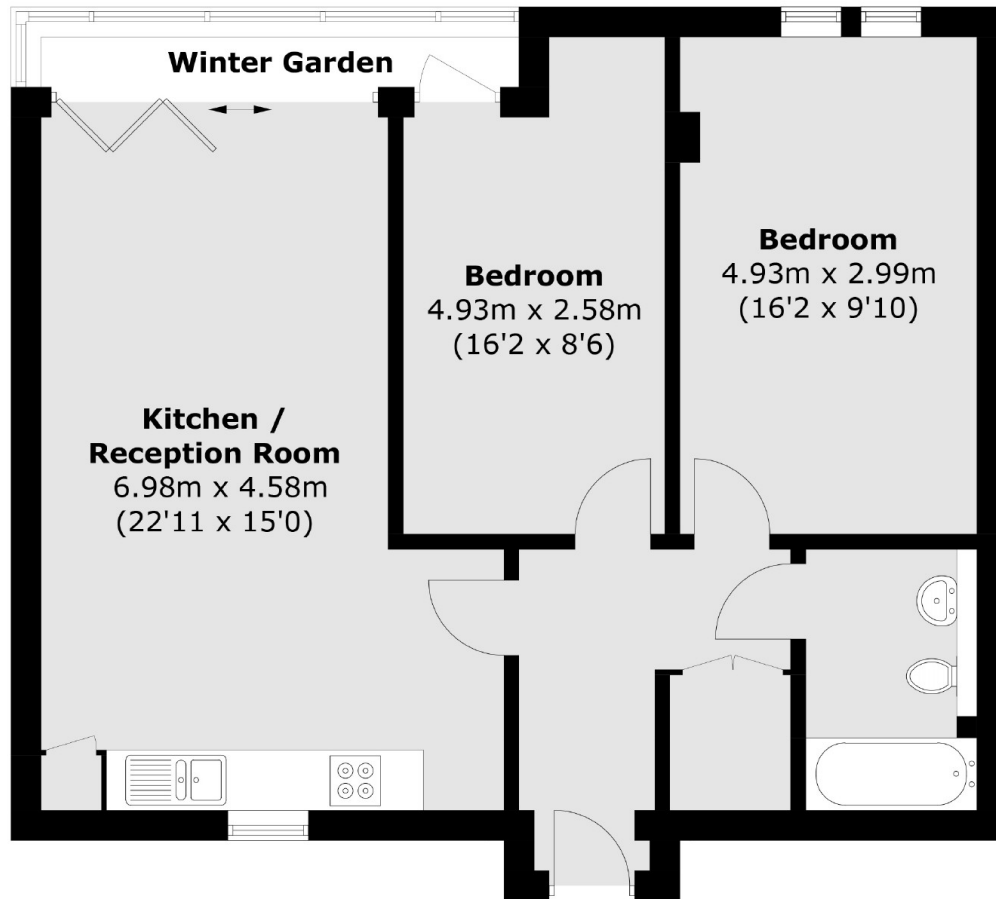
This two double bedroom apartment is located on the first floor and boasts 734sq/ft of internal space. The property comprises a good size open plan kitchen / living area which leads onto a fantastic winter garden. Both bedrooms are spacious and have ample space for storage. There is also a communal garden located on the ground floor.

Sarawak Court is situated on Consort Road which is a well-connected spot with Peckham Rye's Zone 2 trains (main line and Overground) just a short stroll away. You can also walk easily to Queen's Road Peckham Station and Nunhead Station. Rye Lane and Bellenden Road are close for great local amenities.

### Features

- Two Double Bedrooms
- Modern Development
- Open Plan Layout
- Winter Garden
- 734 Sq/Ft
- Close To Transport Links

# Consort Road, London, SE15



Total area (approx.): 68.2 sq. m (734.1 sq. ft)  
Winter Garden : 2.4 sq. m (25.8 sq. ft)