



Barforth Road, SE15

£1,300,000

Dexters



Barforth Road, SE15

This beautiful four-bedroom, natural three storey Victorian family house boasts a superb floor area of over 2,400 SQ.FT and has a clean, modern finish throughout.

The combination of elegant reception rooms with their beautiful high ceilings and period fireplaces, and a contemporary, extended kitchen to the rear, means this semi-detached house very successfully marries the best of the old with the best of the new. The kitchen has a lovely side extension with skylights, plus rear bi-fold doors to the landscaped garden. It has become a wonderfully light and spacious area, comprising an excellent range of units, central island, and sizeable dining area, ideal for a family. A cellar off the hallway offers excellent storage and there is a useful downstairs WC. Upstairs there are four generous double bedrooms, three share an attractive family bathroom/wc with the top floor bedroom benefiting a stylish ensuite shower room.

Barforth Road is a sought after residential street perfectly placed for the open space of Peckham Rye Common. Both Peckham Rye and Nunhead train stations are equidistance providing overground connections to London Bridge, Blackfriars and the City.

Features

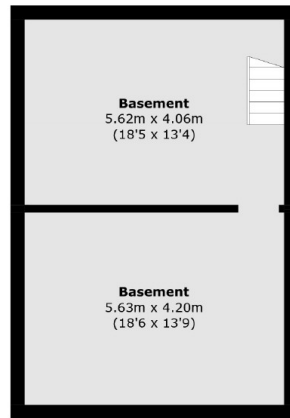
- Semi detached
- Three Storey
- Four Bedrooms
- Large Garden
- Extended Kitchen
- Sought After Road



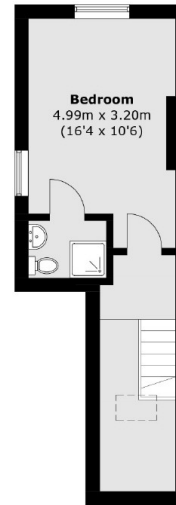




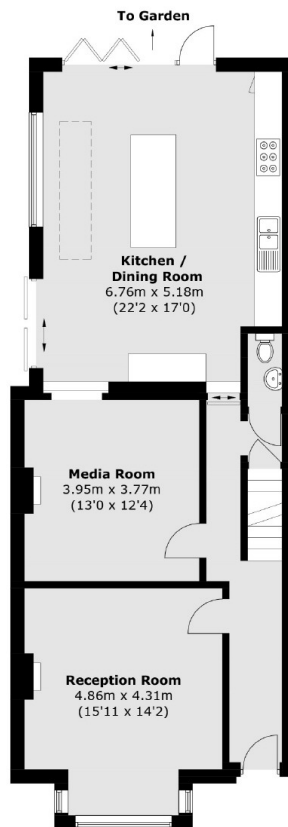
Barforth Road, London, SE15



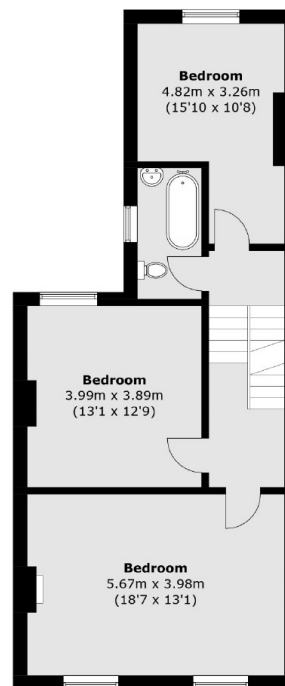
Basement



Second Floor



Ground Floor



First Floor

Total area (approx.): 223.4 sq. m (2,404.6 sq. ft)
(Including Basement)