



Rye Hill Park, SE15

£475,000

A well presented two double bedroom property, situated within a stones throw away from Peckham Rye Park, offering fantastic views of the London skyline.

Conveniently located and within easy reach of Peckham Rye & Nunhead stations. Lordship Lane & Nunhead Lane are both within close proximity, and offer an array of independent shops, cafés and restaurants.

Features

- Two Double Bedrooms
- Second Floor
- Communal Garden
- Close To Peckham Rye Park
- Fantastic Views
- Share Of Freehold



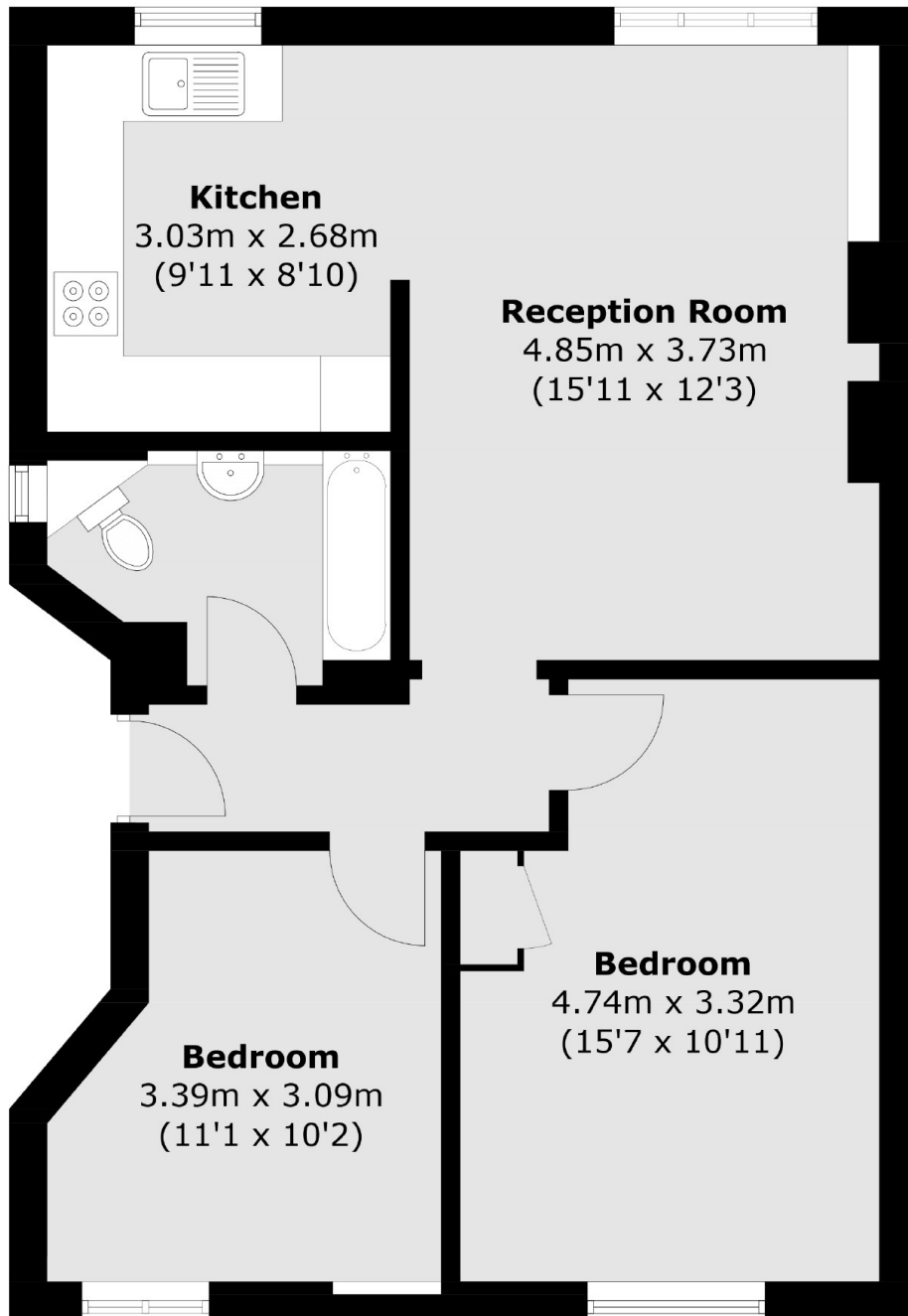
Rye Hill Park, SE15

The property is located on the second floor of this charming Victorian building, and comprises two double bedrooms, with the master being particularly generous in size. The kitchen has been renovated to a very good standard, with gas hob, modern appliances and ample storage, and is semi open plan to a large living space with room for dining table and chairs.

Double glazing and original wooden floors can be found throughout, and there is also a good size communal garden accessed via a secure gate on the ground floor. The property is offered with a share of the freehold.



Rye Hill Park,
London, SE15



Total area (approx.): 61.1 sq. m (657.7 sq. ft)