



**Commercial Way, SE15**

**£900,000**

**Dexters**



## Commercial Way, SE15

This exceptional Victorian house at over 1400 Sq Ft has been the subject of a complete programme of full extension and high-end interior design. The result is a stylish, yet practical contemporary home with an excellent layout, situated in a prime Peckham location.

On the ground floor the double reception room has been fully knocked through to create one very large space. Parquet style flooring reinforces the modern theme whilst the high ceilings, angled bay window and fireplace retains its period feel. There is also a smart cloakroom/WC and lovely entrance hall. The stylish kitchen is perfect for entertaining. It receives wonderful natural light courtesy of two single doors and large bay window, all of which open onto a useful side return and court yard garden. The kitchen features beautiful bespoke units with stone work tops, parquet floor and central island whilst leaving plenty of space for a dining table.

On the upper floors the four double bedrooms are served by two bathrooms. The top floor comprises a master suite that benefits from an en-suite shower. This top floor landing also leads out to the properties main outside space, a stunning south facing roof terrace with artificial grass providing a wonderful addition to this beautiful home.

Commercial way is perfectly located for the shops and bars on Queen's Road and Berden Road home for some excellent independent restaurants. The

### Features

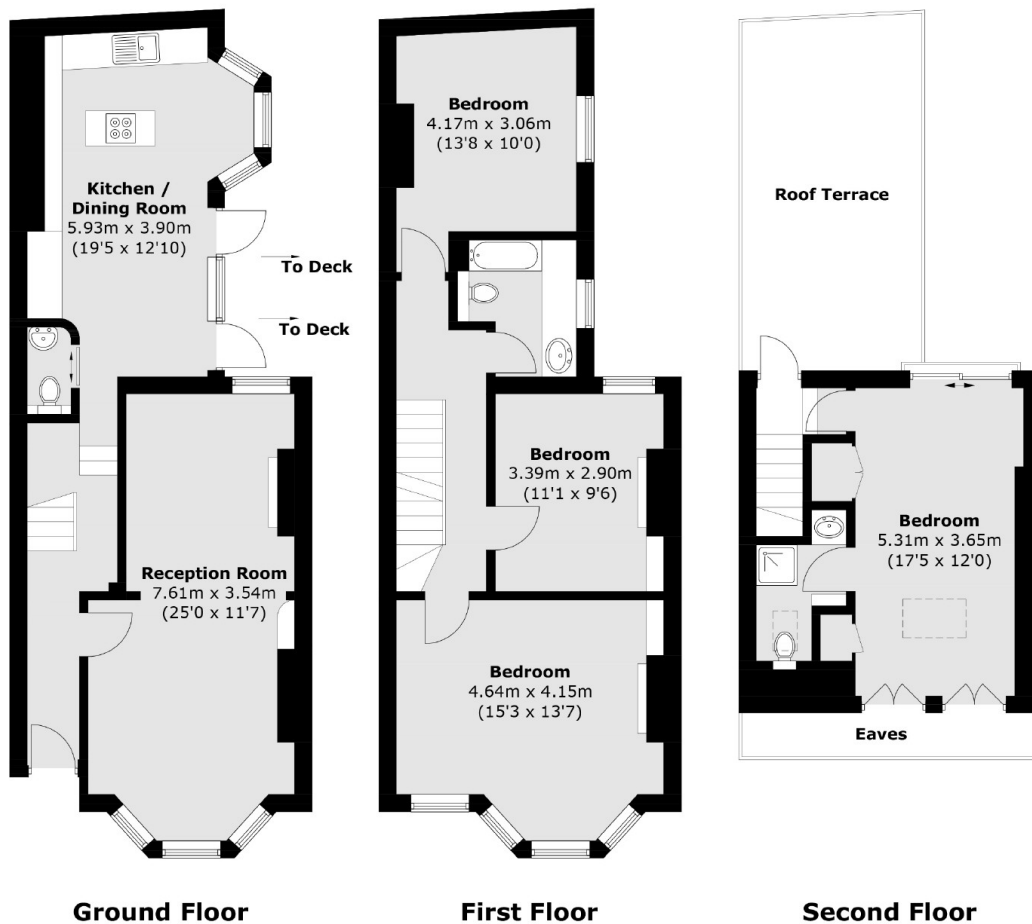
- Victorian Terrace
- Contemporary Design
- Fully Extended
- South Facing Roof Terrace
- Four Bedrooms
- Two Bathrooms







# Commercial Way, London, SE15



Total area (approx.): 131.4 sq. m (1,414.4 sq. ft)  
Roof Terrace area: 18.8 sq. m (202.4 sq. ft)