



Lugard Road, SE15

£775,000

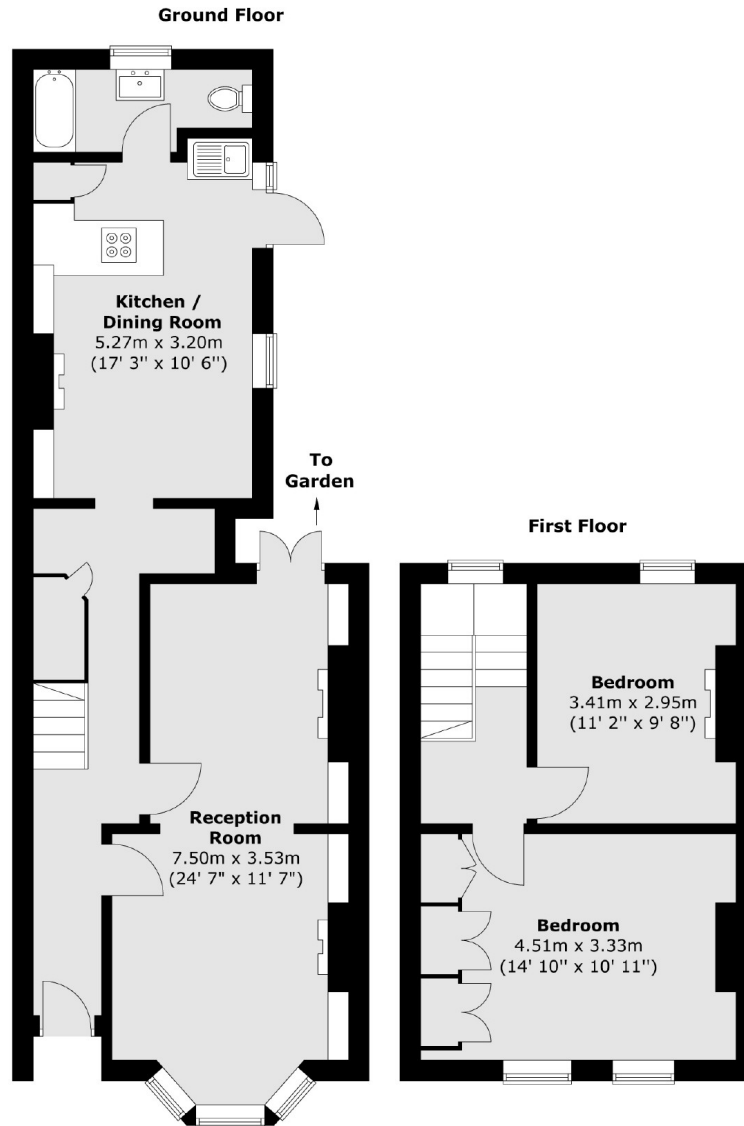
Offered to the market with no onward chain, this wonderfully light 2 double bedroom Victorian house combines spacious, well-appointed accommodation with a clean neutral finish. It has excellent proportions and potential for further expansion into the large loft and side return (STPP).

Situated in a hugely popular location, perfectly placed a few minutes walk from Queens Road Peckham Station (Zone 2) with frequent Overground and rail links into Central London. The shops, bars and restaurants of Peckham high street and Camberwell are all close at hand.

Features

- Victorian Terrace
- Through Reception
- Eat-In Kitchen
- Two Double Bedrooms
- Potential To Extend (STPP)
- No Onward Chain

Lugard Road, London, SE15



Total area (approx.) : 88 sq. m (947 sq. ft)