



Gervase Street, SE15

£500,000

This expansive two bedroom apartment is set within a converted school development. The space is characterised by wide communal hallways, high ceilings, exposed brickwork and floor to ceiling windows. A mezzanine level provides additional floorspace and communal gardens offer all-important outdoor space.

Queen's Road Peckham provides frequent rail links to London Bridge and London Overground services to Clapham Junction, Canada Water, Shoreditch and Dalston. There are frequent bus services to Central London from Old Kent Road. Green spaces are easily accessed at Peckham Rye, Burgess Park and Telegraph Hill. Queens Road is increasingly a popular hub for dining,

Features

- Converted School
- Two Bedrooms
- Mezzanine Floor
- High Ceilings
- Allocated Parking
- Convenient Location



Gervase Street, SE15

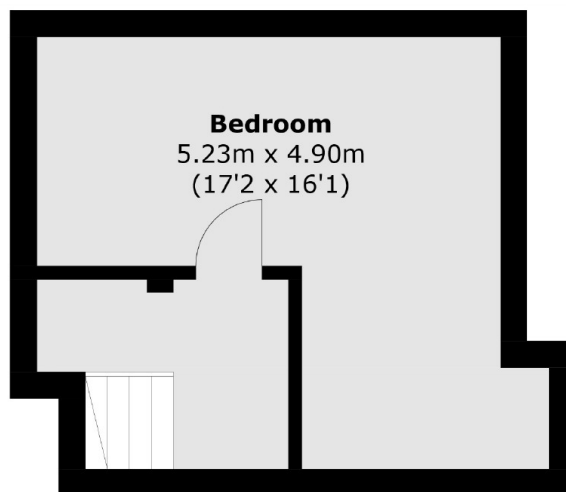
The living space, laid out on the first floor, has double-height ceilings and large windows flooding the accommodation with natural light. The main living area offers a large footprint with a dedicated kitchen area, open plan dining and living space. Above is a mezzanine level, providing a versatile space suitable for a range of functions including a second entertaining area, a work from home space or a second bedroom if required.

The main bedroom, situated on the first floor and served by a stylish bathroom / wc, boasts similar height ceilings and large windows. Additional storage is found off the entrance hall

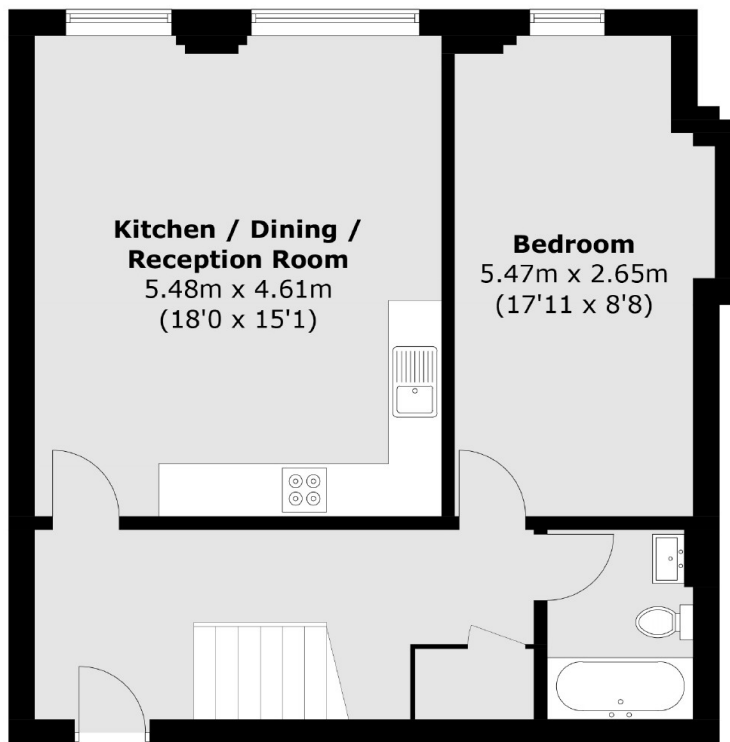
A communal garden sits at the front of the building offering a relaxing outside space which has been thoughtfully planted with mature trees and raised borders, allowing plenty of space for outside tables and chairs to sit and relax. There is also an allocated parking space.



Gervase Street, London, SE15



Second Floor (Mezzanine)



First Floor

Total area (approx.): 83.7 sq. m (900.9 sq. ft)