



## Grove Lane, SE5

£650,000

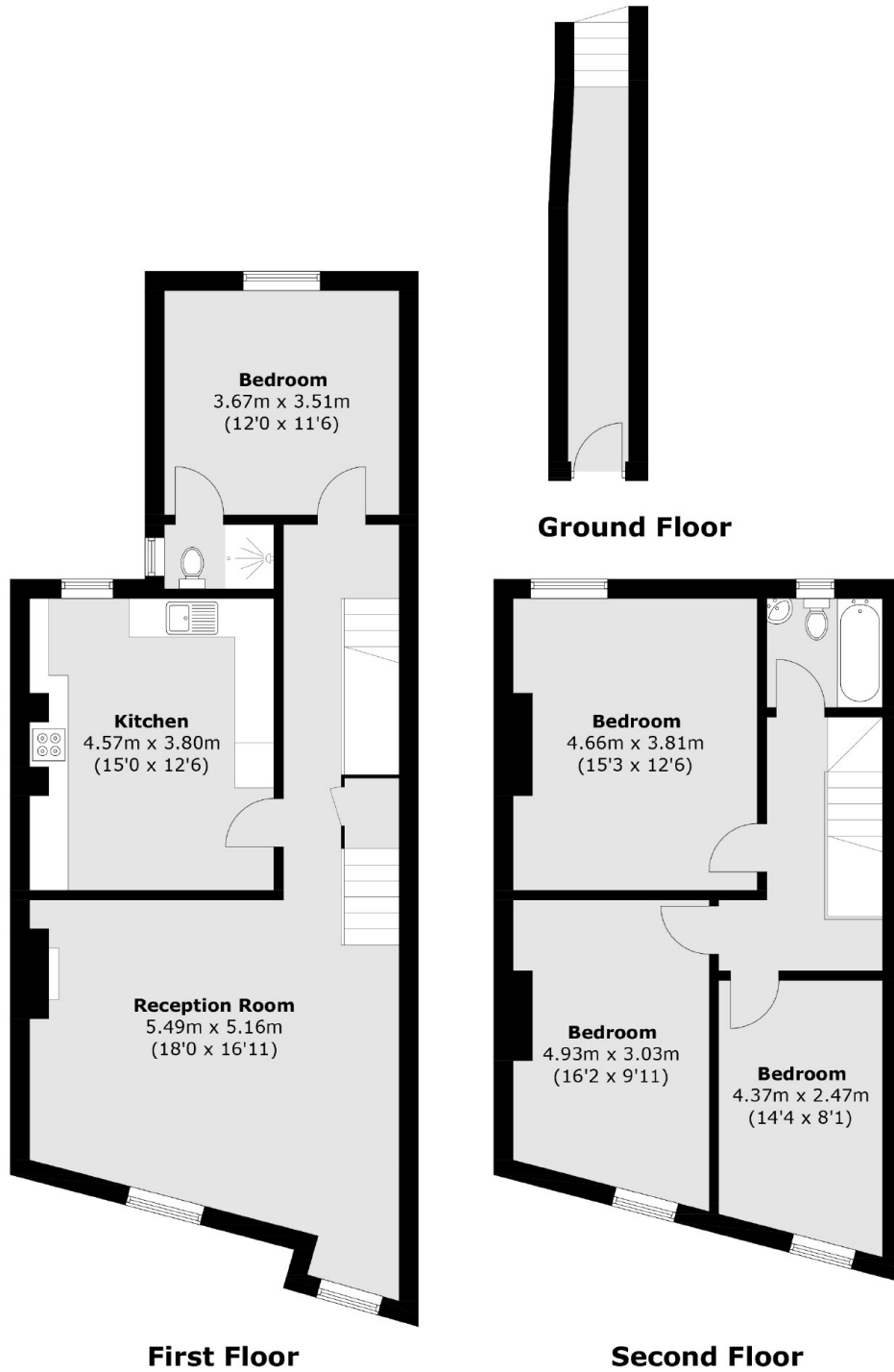
An incredibly spacious four double bedroom, two bathroom maisonette occupying the upper two floors of a substantial Victorian property. Situated in an extremely convenient position a short walk to Denmark Hill station and close to the green spaces of Ruskin Park

This property is positioned on the top two floors above a converted shop on Grove Lane within the heart of Denmark Hill. The location is super-convenient with numerous shops, bars and restaurants that surround it and rail and bus facilities close by.

### Features

Period Maisonette  
Over 1400 Sq Ft  
Four Bedrooms  
Two Bathrooms  
No Onward Chain  
Share of Freehold

# Grove Lane, , SE5



Total area (approx.): 134.3 sq. m (1,445.6 sq. ft)