

18 George Roche Road  
Canterbury Kent CT1 3FG  
£1,300 PCM





# 18 George Roche Road, Canterbury, Kent, CT1 3FG

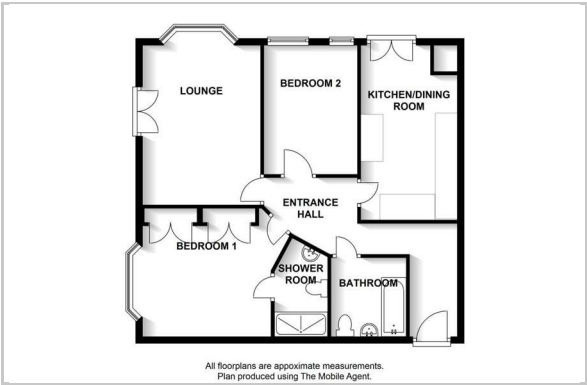
A delightful, spacious two double bedroom apartment in the sought after development of George Roche Road which is close proximity to K&C hospital and walking distance to the city centre. This top floor apartment offers two double bedrooms, two bathrooms, a generous size lounge and kitchen/diner. The kitchen has fully integrated appliances and the property further benefits from an allocated parking space.

Note: 12 Months. Unfurnished. Council Tax Band D.

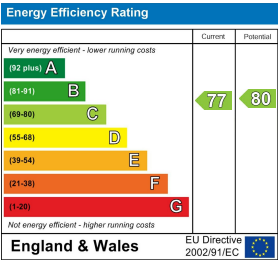
## Area Map



## Floor Plan



## Energy Efficiency Graph



These particulars, whilst believed to be accurate are set out as a general outline only for guidance and do not constitute any part of an offer or contract. Intending purchasers should not rely on them as statements of representation of fact, but must satisfy themselves by inspection or otherwise as to their accuracy. No person in this firms employment has the authority to make or give any representation or warranty in respect of the property.